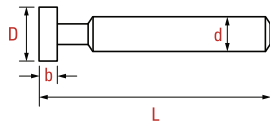
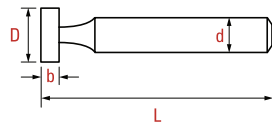


DYC BEST TOTAL TOOLS

ハイスカッター



ハイスTカッター SKH51



| Tolerance (公差) | | |
|----------------|----|----|
| b | d | L |
| e8 | h8 | ±1 |

| Item no. 型番 | D 刃径 | Price(価格)(円) | | | No. of Flute 刃数 | d シャンク径 | L 全長 |
|----------------|---------|--------------|---------|--------|-----------------------|------------|---------|
| | | 1T/1.5T | 2T/2.5T | 3T~12T | | | |
| TC01H1-010 | 10.0 | 1,920 | 1,720 | 1,540 | 8 | 10 | 50 |
| TC01H1-012 | 12.0 | 2,010 | 1,800 | 1,610 | 8 | 12 | 52 |
| TC01H1-013 | 13.0 | 2,070 | 1,850 | 1,650 | 8 | 12 | 55 |
| TC01H1-014 | 14.0 | 2,120 | 1,900 | 1,700 | 8 | 12 | 55 |
| TC01H1-015 | 15.0 | 2,190 | 1,970 | 1,760 | 8 | 12 | 58 |
| TC01H1-016 | 16.0 | 2,410 | 2,160 | 1,930 | 10 | 12 | 58 |
| TC01H1-018 | 18.0 | 2,560 | 2,300 | 2,050 | 10 | 12 | 60 |
| TC01H1-019 | 19.0 | 2,640 | 2,360 | 2,110 | 10 | 12 | 60 |
| TC01H1-020 | 20.0 | 3,030 | 2,710 | 2,420 | 10 | 12 | 60 |
| TC01H1-022 | 22.0 | 3,350 | 3,000 | 2,680 | 10 | 12 | 60 |
| TC01H1-024 | 24.0 | 3,690 | 3,310 | 2,950 | 12 | 12 | 60 |
| TC01H1-025 | 25.0 | 3,980 | 3,570 | 3,180 | 12 | 12 | 62 |
| TC01H1-026 | 26.0 | 4,240 | 3,800 | 3,390 | 12 | 12 | 62 |
| TC01H1-028 | 28.0 | 4,840 | 4,340 | 3,870 | 12 | 12 | 65 |
| TC01H1-030 | 30.0 | 5,810 | 5,210 | 4,650 | 12 | 12 | 65 |
| TC01H1-032 | 32.0 | 6,440 | 5,770 | 5,150 | 14 | 12 | 65 |
| TC01H1-035 | 35.0 | 7,430 | 6,660 | 5,940 | 14 | 12 | 67 |
| TC01H1-038 | 38.0 | 8,770 | 7,860 | 7,020 | 14 | 12 | 70 |
| TC01H1-040 | 40.0 | 10,950 | 9,820 | 8,760 | 14 | 12 | 72 |
| TC01H1-045 | 45.0 | 14,740 | 13,210 | 11,790 | 14 | 16 | 76 |
| TC01H1-050 | 50.0 | 18,270 | 16,370 | 14,620 | 16 | 16 | 85 |
| TC01H1-060 | 60.0 | 28,810 | 25,820 | 23,050 | 18 | 16 | 95 |

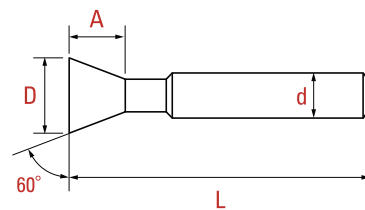
- 上記以外のサイズについてはお問い合わせください。
- 標準厚さは(b)1T、1.5T、2T、2.5T、3T、4T、5T、6T、7T、8T、9T、10T、12Tです。

ハイスソリッド アンギュラーカッター 60°、SKH51



| Item no. 型番 | D 刃径 | Price 価格(円) | A 刃長さ | No. of Flute 刃数 | d シャンク 径 | L 全長 |
|----------------|---------|----------------|----------|-----------------------|----------------|---------|
| TA01H1-010 | 10.0 | 2,020 | 4.5 | 8 | 10 | 50 |
| TA01H1-012 | 12.0 | 1,900 | 5.5 | 8 | 12 | 52 |
| TA01H1-013 | 13.0 | 1,880 | 5.5 | 8 | 12 | 55 |
| TA01H1-014 | 14.0 | 1,950 | 6.0 | 8 | 12 | 55 |
| TA01H1-015 | 15.0 | 2,080 | 6.8 | 8 | 12 | 58 |
| TA01H1-016 | 16.0 | 2,140 | 7.2 | 8 | 12 | 58 |
| TA01H1-018 | 18.0 | 2,420 | 8.0 | 8 | 12 | 60 |
| TA01H1-020 | 20.0 | 2,700 | 8.0 | 8 | 12 | 65 |
| TA01H1-022 | 22.0 | 3,030 | 9.0 | 10 | 12 | 67 |
| TA01H1-024 | 24.0 | 3,520 | 10.0 | 10 | 12 | 70 |
| TA01H1-025 | 25.0 | 3,630 | 11.5 | 10 | 12 | 70 |
| TA01H1-028 | 28.0 | 4,680 | 12.0 | 10 | 16 | 73 |
| TA01H1-030 | 30.0 | 5,300 | 12.5 | 10 | 16 | 75 |
| TA01H1-032 | 32.0 | 5,770 | 14.0 | 12 | 16 | 75 |
| TA01H1-035 | 35.0 | 7,050 | 15.2 | 12 | 16 | 80 |
| TA01H1-038 | 38.0 | 9,180 | 16.0 | 14 | 20 | 83 |
| TA01H1-040 | 40.0 | 10,210 | 17.0 | 14 | 20 | 85 |
| TA01H1-045 | 45.0 | 13,820 | 22.0 | 14 | 20 | 90 |
| TA01H1-050 | 50.0 | 16,460 | 24.0 | 16 | 25 | 93 |
| TA01H1-060 | 60.0 | 26,250 | 29.0 | 18 | 25 | 110 |
| TA01H1-070 | 70.0 | 34,660 | 32.0 | 20 | 32 | 120 |
| TA01H1-080 | 80.0 | 48,560 | 35.0 | 22 | 32 | 130 |

上記以外のサイズについてはお問い合わせください。

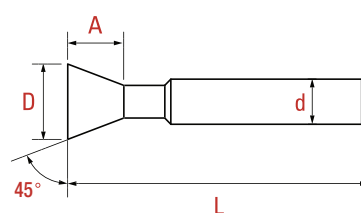


| Tolerance (公差) | | |
|----------------|----|----|
| D | d | L |
| js16 | h8 | ±1 |

ハイスソリッド アンギュラーカッター 45°、SKH51



HSS



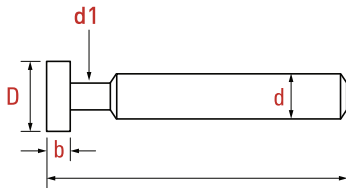
| Item no. 型番 | D 刃径 | Price 価格(円) | A 刃長さ | No. of Flute 刃数 | d シャンク径 | L 全長 |
|----------------|---------|----------------|----------|-----------------------|------------|---------|
| TA02H1-010 | 10.0 | 2,020 | 2.5 | 8 | 10 | 50 |
| TA02H1-012 | 12.0 | 1,900 | 3.5 | 8 | 12 | 52 |
| TA02H1-013 | 13.0 | 1,880 | 3.5 | 8 | 12 | 55 |
| TA02H1-014 | 14.0 | 1,950 | 4.0 | 8 | 12 | 55 |
| TA02H1-015 | 15.0 | 2,080 | 4.5 | 10 | 12 | 58 |
| TA02H1-016 | 16.0 | 2,140 | 5.0 | 10 | 12 | 58 |
| TA02H1-018 | 18.0 | 2,420 | 5.0 | 10 | 12 | 60 |
| TA02H1-020 | 20.0 | 2,700 | 6.0 | 10 | 12 | 65 |
| TA02H1-022 | 22.0 | 3,030 | 6.0 | 10 | 12 | 67 |
| TA02H1-024 | 24.0 | 3,520 | 6.0 | 12 | 12 | 70 |
| TA02H1-025 | 25.0 | 3,630 | 6.5 | 12 | 12 | 70 |
| TA02H1-028 | 28.0 | 4,680 | 7.0 | 12 | 16 | 73 |
| TA02H1-030 | 30.0 | 5,300 | 8.0 | 12 | 16 | 75 |
| TA02H1-032 | 32.0 | 5,770 | 9.0 | 14 | 16 | 75 |
| TA02H1-035 | 35.0 | 7,050 | 10.0 | 14 | 16 | 80 |

| Item no. 型番 | D 刃径 | Price 価格(円) | A 刃長さ | No. of Flute 刃数 | d シャンク径 | L 全長 |
|----------------|---------|----------------|----------|-----------------------|------------|---------|
| TA02H1-038 | 38.0 | 9,180 | 10.5 | 14 | 20 | 83 |
| TA02H1-040 | 40.0 | 10,210 | 11.0 | 14 | 20 | 85 |
| TA02H1-045 | 45.0 | 13,820 | 12.5 | 16 | 20 | 90 |
| TA02H1-050 | 50.0 | 16,460 | 13.0 | 16 | 25 | 93 |
| TA02H1-060 | 60.0 | 26,250 | 15.0 | 18 | 25 | 110 |
| TA02H1-070 | 70.0 | 34,660 | 17.0 | 20 | 32 | 120 |
| TA02H1-080 | 80.0 | 48,560 | 18.0 | 22 | 32 | 130 |

上記以外のサイズについてはお問い合わせください。

| Tolerance (公差) | | |
|----------------|----|----|
| b | d | L |
| js16 | h8 | ±1 |

ハイスTスロットカッター SKH51

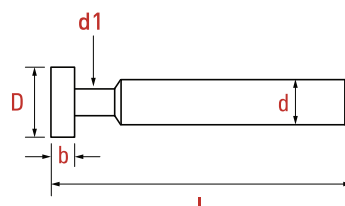


| Item no. 型番 | D 刃径 | Price 価格(円) | No. of Flute 刃数 | d1 首径 | d シャンク 径 | L 全長 |
|----------------|---------|----------------|-----------------------|----------|----------------|---------|
| TS01H1-012 | 12.0 | 1,980 | 8 | 5 | 10 | 60 |
| TS01H1-015 | 15.0 | 2,120 | 8 | 7 | 12 | 65 |
| TS01H1-016 | 16.0 | 2,490 | 8 | 8 | 12 | 65 |
| TS01H1-018 | 18.0 | 2,860 | 8 | 8 | 12 | 70 |
| TS01H1-020 | 20.0 | 3,300 | 8 | 9 | 12 | 70 |
| TS01H1-022 | 22.0 | 3,930 | 10 | 9 | 12 | 72 |
| TS01H1-024 | 24.0 | 4,440 | 10 | 10 | 12 | 78 |
| TS01H1-025 | 25.0 | 4,570 | 10 | 10 | 12 | 78 |
| TS01H1-026 | 26.0 | 5,340 | 10 | 10.5 | 12 | 78 |
| TS01H1-028 | 28.0 | 5,960 | 10 | 12.5 | 16 | 80 |
| TS01H1-030 | 30.0 | 7,040 | 12 | 13 | 16 | 82 |
| TS01H1-035 | 35.0 | 8,500 | 12 | 17.5 | 20 | 90 |
| TS01H1-038 | 38.0 | 11,410 | 12 | 17.5 | 20 | 92 |
| TS01H1-040 | 40.0 | 12,190 | 12 | 18 | 20 | 100 |
| TS01H1-045 | 45.0 | 16,420 | 14 | 22 | 25 | 105 |
| TS01H1-050 | 50.0 | 19,900 | 14 | 22 | 25 | 110 |

| Tolerance (公差) | | | |
|----------------|-----|----|----|
| D | b | d | L |
| d11 | d11 | h8 | ±1 |

- 上記以外のサイズについてはお問い合わせください。
- 標準厚さは(b)3T、4T、5T、6T、7T、8T、10T、12Tである。

ハイス千鳥刃Tスロットカッター SKH51

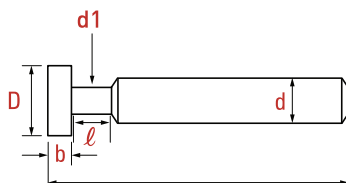


| Item no. 型番 | D 刃径 | Price 価格(円) | No. of Flute 刃数 | d1 首径 | d シャンク 径 | L 全長 |
|----------------|---------|----------------|-----------------------|----------|----------------|---------|
| TS02H1-015 | 15.0 | 3,000 | 8 | 7 | 12 | 65 |
| TS02H1-016 | 16.0 | 3,030 | 8 | 8 | 12 | 65 |
| TS02H1-018 | 18.0 | 3,550 | 8 | 8 | 12 | 70 |
| TS02H1-020 | 20.0 | 4,320 | 8 | 9 | 12 | 70 |
| TS02H1-022 | 22.0 | 5,010 | 8 | 9 | 12 | 72 |
| TS02H1-024 | 24.0 | 6,380 | 8 | 10 | 12 | 78 |
| TS02H1-025 | 25.0 | 6,550 | 8 | 10 | 12 | 78 |
| TS02H1-026 | 26.0 | 7,110 | 8 | 10.5 | 12 | 78 |
| TS02H1-028 | 28.0 | 7,920 | 8 | 12.5 | 16 | 80 |
| TS02H1-030 | 30.0 | 8,920 | 8 | 13 | 16 | 82 |
| TS02H1-035 | 35.0 | 11,170 | 8 | 17.5 | 20 | 90 |
| TS02H1-038 | 38.0 | 15,140 | 10 | 17.5 | 20 | 92 |
| TS02H1-040 | 40.0 | 15,600 | 10 | 18 | 20 | 100 |
| TS02H1-045 | 45.0 | 20,240 | 12 | 22 | 25 | 105 |
| TS02H1-050 | 50.0 | 24,440 | 12 | 22 | 25 | 110 |

| Tolerance (公差) | | | |
|----------------|-----|----|----|
| D | b | d | L |
| d11 | d11 | h8 | ±1 |

- ・上記以外のサイズについてはお問い合わせください。
- ・標準厚さは(b)3T、4T、5T、6T、7T、8T、10T、12Tである。

ハイスラセン型ラフィング Tスロットカッター SKH51

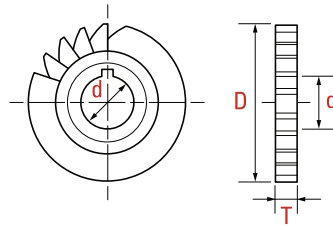


| Item no. 型番 | D 刃径 | b 刃幅 | Price 価格(円) | No. of Flute 刃数 | d1 首径 | l 首長さ | d シャンク径 | L 全長 |
|----------------|---------|---------|----------------|-----------------------|----------|----------|------------|---------|
| TS03H1-110 | 11.0 | 3.5 | 1,850 | 4 | 4 | 10 | 10 | 54 |
| TS03H1-125 | 12.5 | 6 | 1,900 | 4 | 5 | 11 | 10 | 57 |
| TS03H1-160 | 16.0 | 8 | 2,900 | 4 | 7 | 14 | 10 | 61 |
| TS03H1-180 | 18.0 | 8 | 3,440 | 4 | 8 | 17 | 12 | 70 |
| TS03H1-210 | 21.0 | 9 | 4,680 | 5 | 10 | 20 | 12 | 74 |
| TS03H1-250 | 25.0 | 11 | 6,690 | 5 | 12 | 23 | 16 | 82 |
| TS03H1-320 | 32.0 | 14 | 9,000 | 6 | 15 | 28 | 16 | 89 |
| TS03H1-400 | 40.0 | 18 | 15,720 | 6 | 19 | 34 | 25 | 108 |
| TS03H1-500 | 50.0 | 22 | 25,810 | 6 | 25 | 42 | 32 | 124 |
| TS03H1-600 | 60.0 | 28 | 32,960 | 8 | 30 | 50 | 32 | 139 |

- ・上記以外のサイズについてはお問い合わせください。
- ・この商品のコートはTiNコートのみとなります

| Tolerance (公差) | | | |
|----------------|-----|----|----|
| D | b | d | L |
| d11 | d11 | h8 | ±1 |

ハイスサイドカッター SKH51



| Item no. 型番 | D(刃径) | | | |
|----------------|---------|--------------------|-----------------------|---------|
| | 75mm | | | |
| | T 刃幅 | Price 価格 (円) | No. of Flute 刃数 | d 内径 |
| SM01H1-020-75 | 2.0 | 5,520 | 32EA | Ø25.4 |
| SM01H1-025-75 | 2.5 | 5,520 | | |
| SM01H1-030-75 | 3.0 | 4,480 | 24EA | |
| SM01H1-035-75 | 3.5 | 4,510 | | |
| SM01H1-040-75 | 4.0 | 4,510 | 22EA | |
| SM01H1-045-75 | 4.5 | 4,710 | | |
| SM01H1-050-75 | 5.0 | 4,710 | | |
| SM01H1-060-75 | 6.0 | 5,090 | | |
| SM01H1-070-75 | 7.0 | 5,280 | | |
| SM01H1-080-75 | 8.0 | 5,480 | | |
| SM01H1-090-75 | 9.0 | 5,680 | | |
| SM01H1-100-75 | 10.0 | 5,870 | | |
| SM01H1-110-75 | 11.0 | 6,290 | | |
| SM01H1-120-75 | 12.0 | 6,480 | | |
| SM01H1-130-75 | 13.0 | 6,680 | | |
| SM01H1-140-75 | 14.0 | 6,880 | | |
| SM01H1-150-75 | 15.0 | 7,070 | | |
| SM01H1-160-75 | 16.0 | 7,450 | | |
| SM01H1-170-75 | 17.0 | 7,650 | | |
| SM01H1-180-75 | 18.0 | 7,840 | | |
| SM01H1-190-75 | 19.0 | 8,580 | | |
| SM01H1-200-75 | 20.0 | 9,150 | | |

| Item no. 型番 | D(刃径) | | | |
|----------------|---------|--------------------|-----------------------|---------|
| | 100mm | | | |
| | T 刃幅 | Price 価格 (円) | No. of Flute 刃数 | d 内径 |
| SM01H1-020-100 | 2.0 | 7,840 | 36EA | Ø25.4 |
| SM01H1-025-100 | 2.5 | 7,840 | | |
| SM01H1-030-100 | 3.0 | 6,540 | 28EA | |
| SM01H1-035-100 | 3.5 | 6,720 | | |
| SM01H1-040-100 | 4.0 | 6,720 | 26EA | |
| SM01H1-045-100 | 4.5 | 6,880 | | |
| SM01H1-050-100 | 5.0 | 6,880 | | |
| SM01H1-060-100 | 6.0 | 7,410 | | |
| SM01H1-070-100 | 7.0 | 7,760 | | |
| SM01H1-080-100 | 8.0 | 8,110 | | |
| SM01H1-090-100 | 9.0 | 8,450 | | |
| SM01H1-100-100 | 10.0 | 8,800 | | |
| SM01H1-110-100 | 11.0 | 9,770 | | |
| SM01H1-120-100 | 12.0 | 10,120 | | |
| SM01H1-130-100 | 13.0 | 10,460 | | |
| SM01H1-140-100 | 14.0 | 10,810 | | |
| SM01H1-150-100 | 15.0 | 12,040 | | |
| SM01H1-160-100 | 16.0 | 13,960 | | |
| SM01H1-170-100 | 17.0 | 14,330 | | |
| SM01H1-180-100 | 18.0 | 14,700 | | |
| SM01H1-190-100 | 19.0 | 15,080 | | |
| SM01H1-200-100 | 20.0 | 15,450 | | |

| Item no. 型番 | D(刃径) | | | |
|----------------|---------|--------------------|-----------------------|---------|
| | 125mm | | | |
| | T 刃幅 | Price 価格 (円) | No. of Flute 刃数 | d 内径 |
| SM01H1-020-125 | 2.0 | 12,770 | 40EA | Ø25.4 |
| SM01H1-025-125 | 2.5 | 12,770 | 32EA | |
| SM01H1-030-125 | 3.0 | 11,450 | | |
| SM01H1-035-125 | 3.5 | 10,680 | | |
| SM01H1-040-125 | 4.0 | 10,680 | | |
| SM01H1-045-125 | 4.5 | 11,230 | | |
| SM01H1-050-125 | 5.0 | 11,230 | | |
| SM01H1-060-125 | 6.0 | 11,980 | | |
| SM01H1-070-125 | 7.0 | 12,540 | | |
| SM01H1-080-125 | 8.0 | 13,090 | | |
| SM01H1-090-125 | 9.0 | 13,640 | | |
| SM01H1-100-125 | 10.0 | 14,200 | | |
| SM01H1-110-125 | 11.0 | 16,070 | | |
| SM01H1-120-125 | 12.0 | 16,630 | | |
| SM01H1-130-125 | 13.0 | 17,180 | | |
| SM01H1-140-125 | 14.0 | 17,740 | | |
| SM01H1-150-125 | 15.0 | 18,300 | | |
| SM01H1-160-125 | 16.0 | 20,400 | | |
| SM01H1-170-125 | 17.0 | 20,960 | | |
| SM01H1-180-125 | 18.0 | 21,400 | | |
| SM01H1-190-125 | 19.0 | 22,070 | | |
| SM01H1-200-125 | 20.0 | 22,620 | 28EA | |

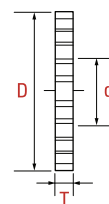
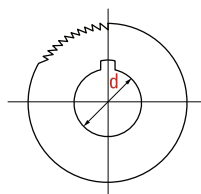
| Item no. 型番 | D(刃径) | | | |
|----------------|---------|--------------------|-----------------------|---------|
| | 150mm | | | |
| | T 刃幅 | Price 価格 (円) | No. of Flute 刃数 | d 内径 |
| SM01H1-020-150 | 2.0 | 18,200 | 44EA | Ø25.4 |
| SM01H1-025-150 | 2.5 | 18,200 | 36EA | |
| SM01H1-030-150 | 3.0 | 16,720 | | |
| SM01H1-035-150 | 3.5 | 15,920 | | |
| SM01H1-040-150 | 4.0 | 15,920 | | |
| SM01H1-045-150 | 4.5 | 16,600 | | |
| SM01H1-050-150 | 5.0 | 16,600 | | |
| SM01H1-060-150 | 6.0 | 17,100 | | |
| SM01H1-070-150 | 7.0 | 17,960 | | |
| SM01H1-080-150 | 8.0 | 18,160 | | |
| SM01H1-090-150 | 9.0 | 19,000 | | |
| SM01H1-100-150 | 10.0 | 19,460 | | |
| SM01H1-110-150 | 11.0 | 20,750 | | |
| SM01H1-120-150 | 12.0 | 21,520 | | |
| SM01H1-130-150 | 13.0 | 22,300 | | |
| SM01H1-140-150 | 14.0 | 23,070 | | |
| SM01H1-150-150 | 15.0 | 24,800 | | |
| SM01H1-160-150 | 16.0 | 27,570 | | |
| SM01H1-170-150 | 17.0 | 29,470 | | |
| SM01H1-180-150 | 18.0 | 30,310 | | |
| SM01H1-190-150 | 19.0 | 31,140 | | |
| SM01H1-200-150 | 20.0 | 33,160 | 32EA | |

| Item no. 型番 | D(刃径) | | | |
|----------------|---------|--------------------|-----------------------|---------|
| | 200mm | | | |
| | T 刃幅 | Price 価格 (円) | No. of Flute 刃数 | d 内径 |
| SM01H1-030-200 | 3.0 | 39,280 | 40EA | Ø25.4 |
| SM01H1-035-200 | 3.5 | 39,280 | 32EA | |
| SM01H1-040-200 | 4.0 | 39,280 | | |
| SM01H1-045-200 | 4.5 | 39,280 | | |
| SM01H1-050-200 | 5.0 | 35,400 | | |
| SM01H1-060-200 | 6.0 | 35,520 | | |
| SM01H1-070-200 | 7.0 | 35,760 | | |
| SM01H1-080-200 | 8.0 | 36,570 | | |
| SM01H1-090-200 | 9.0 | 37,280 | | |
| SM01H1-100-200 | 10.0 | 38,010 | | |
| SM01H1-110-200 | 11.0 | 38,680 | | |
| SM01H1-120-200 | 12.0 | 39,460 | | |
| SM01H1-130-200 | 13.0 | 40,240 | | |
| SM01H1-140-200 | 14.0 | 43,370 | | |
| SM01H1-150-200 | 15.0 | 49,900 | | |
| SM01H1-160-200 | 16.0 | 56,640 | | |
| SM01H1-170-200 | 17.0 | 59,430 | | |
| SM01H1-180-200 | 18.0 | 60,890 | | |
| SM01H1-190-200 | 19.0 | 62,400 | | |
| SM01H1-200-200 | 20.0 | 67,130 | 28EA | |

上記以外のサイズについてはお問い合わせください。

| Tolerance (公差) | | |
|----------------|----|----|
| D | d | T |
| js16 | H7 | k8 |

ハイスメタルソー SKH51



| Item no. 型番 | D(刃径) | | | |
|----------------|---------|--------------------|-----------------------|---------|
| | 50mm | | | |
| | T 刃幅 | Price 価格 (円) | No. of Flute 刃数 | d 内径 |
| MS01H1 -005-50 | 0.5 | 1,600 | 34EA | Ø12.7 |
| MS01H1 -080-50 | 0.8 | 1,510 | | |
| MS01H1 -100-50 | 1.0 | 1,490 | | |
| MS01H1 -120-50 | 1.2 | 1,510 | | |
| MS01H1 -150-50 | 1.5 | 1,540 | 32EA | |
| MS01H1 -200-50 | 2.0 | 1,610 | | |
| MS01H1 -250-50 | 2.5 | 1,760 | | |
| MS01H1 -300-50 | 3.0 | 1,830 | | |
| MS01H1 -350-50 | 3.5 | 2,000 | | |
| MS01H1 -400-50 | 4.0 | 2,100 | | |
| MS01H1 -450-50 | 4.5 | 2,250 | | |
| MS01H1 -500-50 | 5.0 | 2,380 | | |

| Item no. 型番 | D(刃径) | | | |
|----------------|---------|--------------------|-----------------------|---------|
| | 60mm | | | |
| | T 刃幅 | Price 価格 (円) | No. of Flute 刃数 | d 内径 |
| MS01H1 -005-60 | 0.5 | 1,700 | 48EA | Ø15.8 |
| MS01H1 -080-60 | 0.8 | 1,610 | | |
| MS01H1 -100-60 | 1.0 | 1,570 | | |
| MS01H1 -120-60 | 1.2 | 1,580 | | |
| MS01H1 -150-60 | 1.5 | 1,620 | 40EA | |
| MS01H1 -200-60 | 2.0 | 1,690 | | |
| MS01H1 -250-60 | 2.5 | 1,850 | | |
| MS01H1 -300-60 | 3.0 | 1,900 | 32EA | |
| MS01H1 -350-60 | 3.5 | 2,100 | | |
| MS01H1 -400-60 | 4.0 | 2,210 | | |
| MS01H1 -450-60 | 4.5 | 2,360 | | |
| MS01H1 -500-60 | 5.0 | 2,590 | | |
| MS01H1 -550-60 | 5.5 | 2,720 | 24EA | |
| MS01H1 -600-60 | 6.0 | 2,800 | | |

| Tolerance (公差) | | |
|----------------|----|-----|
| D | d | T |
| js16 | H7 | k11 |

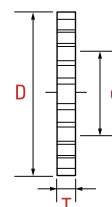
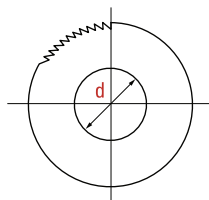
| Item no. 型番 | D(刃径) | | | |
|----------------|---------|--------------------|-----------------------|---------|
| | 75mm | | | |
| | T 刃幅 | Price 価格 (円) | No. of Flute 刃数 | d 内径 |
| MS01H1 -005-75 | 0.5 | 1,900 | 64EA | Ø25.4 |
| MS01H1 -080-75 | 0.8 | 1,810 | | |
| MS01H1 -100-75 | 1.0 | 1,710 | | |
| MS01H1 -120-75 | 1.2 | 1,730 | 48EA | |
| MS01H1 -150-75 | 1.5 | 1,760 | | |
| MS01H1 -200-75 | 2.0 | 1,840 | | |
| MS01H1 -250-75 | 2.5 | 2,020 | 40EA | |
| MS01H1 -300-75 | 3.0 | 2,080 | | |
| MS01H1 -350-75 | 3.5 | 2,300 | | |
| MS01H1 -400-75 | 4.0 | 2,410 | 40EA | |
| MS01H1 -450-75 | 4.5 | 2,600 | | |
| MS01H1 -500-75 | 5.0 | 2,730 | | |
| MS01H1 -550-75 | 5.5 | 2,950 | 32EA | |
| MS01H1 -600-75 | 6.0 | 3,060 | | |

| Item no. 型番 | D(刃径) | | | |
|-----------------|---------|--------------------|-----------------------|---------|
| | 100mm | | | |
| | T 刃幅 | Price 価格 (円) | No. of Flute 刃数 | d 内径 |
| MS01H1 -005-100 | 0.5 | 3,360 | 80EA | Ø25.4 |
| MS01H1 -080-100 | 0.8 | 3,120 | | |
| MS01H1 -100-100 | 1.0 | 2,870 | | |
| MS01H1 -120-100 | 1.2 | 2,980 | 64EA | |
| MS01H1 -150-100 | 1.5 | 3,010 | | |
| MS01H1 -200-100 | 2.0 | 3,090 | | |
| MS01H1 -250-100 | 2.5 | 3,100 | 48EA | |
| MS01H1 -300-100 | 3.0 | 3,170 | | |
| MS01H1 -350-100 | 3.5 | 3,470 | | |
| MS01H1 -400-100 | 4.0 | 3,940 | 40EA | |
| MS01H1 -450-100 | 4.5 | 4,120 | | |
| MS01H1 -500-100 | 5.0 | 4,490 | | |
| MS01H1 -550-100 | 5.5 | 4,700 | 40EA | |
| MS01H1 -600-100 | 6.0 | 4,750 | | |

| Item no. 型番 | D(刃径) | | | |
|-----------------|---------|--------------------|-----------------------|---------|
| | 125mm | | | |
| | T 刃幅 | Price 価格 (円) | No. of Flute 刃数 | d 内径 |
| MS01H1 -005-125 | 0.5 | 6,980 | 80EA | Ø25.4 |
| MS01H1 -080-125 | 0.8 | 6,570 | | |
| MS01H1 -100-125 | 1.0 | 6,140 | | |
| MS01H1 -120-125 | 1.2 | 6,310 | 64EA | |
| MS01H1 -150-125 | 1.5 | 6,370 | | |
| MS01H1 -200-125 | 2.0 | 6,420 | | |
| MS01H1 -250-125 | 2.5 | 6,530 | 48EA | |
| MS01H1 -300-125 | 3.0 | 6,660 | | |
| MS01H1 -350-125 | 3.5 | 6,950 | | |
| MS01H1 -400-125 | 4.0 | 7,130 | 40EA | |
| MS01H1 -450-125 | 4.5 | 7,220 | | |
| MS01H1 -500-125 | 5.0 | 7,440 | | |
| MS01H1 -550-125 | 5.5 | 7,780 | 40EA | |
| MS01H1 -600-125 | 6.0 | 8,300 | | |

| Item no. 型番 | D(刃径) | | | |
|-----------------|---------|--------------------|-----------------------|---------|
| | 150mm | | | |
| | T 刃幅 | Price 価格 (円) | No. of Flute 刃数 | d 内径 |
| - | | | 80EA | Ø25.4 |
| MS01H1 -080-150 | 0.8 | 8,070 | | |
| MS01H1 -100-150 | 1.0 | 7,530 | | |
| MS01H1 -120-150 | 1.2 | 7,750 | 64EA | |
| MS01H1 -150-150 | 1.5 | 7,820 | | |
| MS01H1 -200-150 | 2.0 | 7,870 | | |
| MS01H1 -250-150 | 2.5 | 8,030 | 48EA | |
| MS01H1 -300-150 | 3.0 | 8,180 | | |
| MS01H1 -350-150 | 3.5 | 8,600 | | |
| MS01H1 -400-150 | 4.0 | 8,770 | 48EA | |
| MS01H1 -450-150 | 4.5 | 8,960 | | |
| MS01H1 -500-150 | 5.0 | 9,130 | | |
| MS01H1 -550-150 | 5.5 | 9,560 | 48EA | |
| MS01H1 -600-150 | 6.0 | 10,200 | | |

ハイスリワリフライス45径 SKH51

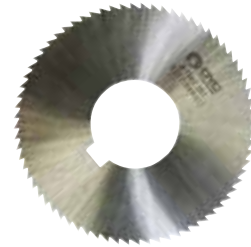
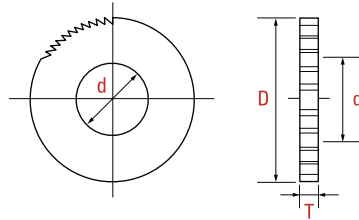


| Item no. 型番 | D(刃径) | | | |
|----------------|---------|----------------|--------------------|---------|
| | Ø45 | | | |
| | T 刃幅 | Price 価格(円) | No. of Flute 刃数 | d 内径 |
| SC01H1-002 | 0.2 | 1,940 | 90EA | Ø15.8 |
| SC01H1-003 | 0.3 | 1,730 | | |
| SC01H1-004 | 0.4 | 1,370 | | |
| SC01H1-005 | 0.5 | 1,230 | | |
| SC01H1-006 | 0.6 | 1,090 | | |
| SC01H1-007 | 0.7 | 1,090 | | |
| SC01H1-008 | 0.8 | 1,090 | | |
| SC01H1-009 | 0.9 | 1,090 | | |
| SC01H1-010 | 1.0 | 1,160 | | |
| SC01H1-012 | 1.2 | 1,210 | | |
| SC01H1-015 | 1.5 | 1,230 | | |
| SC01H1-020 | 2.0 | 1,570 | | |
| SC01H1-025 | 2.5 | 1,570 | | |
| SC01H1-030 | 3.0 | 1,940 | | |

上記以外のサイズについてはお問い合わせください。

| Tolerance (公差) | | |
|----------------|----|-----|
| D | d | T |
| js16 | H7 | k11 |

ハイスリワリフライス70径 SKH51



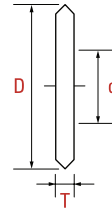
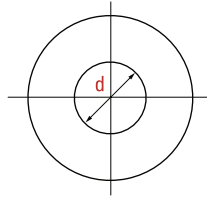
| Item no. 型番 | D(刃径) | | | | |
|----------------|--------|------|----------------|-----------------------|---------|
| | Ø70 | | | | |
| | T (刃幅) | | Price 価格(円) | No. of Flute 刃数 | d 内径 |
| | No. | mm | | | |
| SC02H1-010 | #1 | 7.35 | 3,130 | 72EA | Ø25.4 |
| SC02H1-020 | #2 | 6.54 | 3,130 | | |
| SC02H1-030 | #3 | 5.83 | 3,130 | | |
| SC02H1-040 | #4 | 5.19 | 3,130 | | |
| SC02H1-050 | #5 | 4.62 | 2,950 | | |
| SC02H1-060 | #6 | 4.12 | 2,760 | | |
| SC02H1-070 | #7 | 3.66 | 2,580 | | |
| SC02H1-080 | #8 | 3.26 | 2,020 | | |
| SC02H1-090 | #9 | 2.91 | 1,880 | | |
| SC02H1-100 | #10 | 2.59 | 1,880 | | |
| SC02H1-110 | #11 | 2.30 | 1,880 | | |
| SC02H1-120 | #12 | 2.05 | 1,840 | | |
| SC02H1-130 | #13 | 1.83 | 1,820 | | |
| SC02H1-140 | #14 | 1.63 | 1,820 | | |
| SC02H1-150 | #15 | 1.45 | 1,820 | | |

| Item no. 型番 | D(刃径) | | | | |
|----------------|--------|------|----------------|-----------------------|---------|
| | Ø70 | | | | |
| | T (刃幅) | | Price 価格(円) | No. of Flute 刃数 | d 内径 |
| | No. | mm | | | |
| SC02H1-160 | #16 | 1.29 | 1,620 | 72EA | Ø25.4 |
| SC02H1-170 | #17 | 1.15 | 1,620 | | |
| SC02H1-180 | #18 | 1.02 | 1,530 | | |
| SC02H1-190 | #19 | 0.91 | 1,530 | | |
| SC02H1-200 | #20 | 0.81 | 1,510 | | |
| SC02H1-210 | #21 | 0.72 | 1,510 | | |
| SC02H1-220 | #22 | 0.64 | 1,510 | | |
| SC02H1-230 | #23 | 0.57 | 1,530 | | |
| SC02H1-240 | #24 | 0.51 | 1,560 | | |
| SC02H1-250 | #25 | 0.45 | 1,560 | | |
| SC02H1-260 | #26 | 0.40 | 1,690 | | |
| SC02H1-270 | #27 | 0.36 | 2,020 | | |
| SC02H1-280 | #28 | 0.32 | 2,020 | | |
| SC02H1-290 | #29 | 0.29 | 2,130 | | |
| SC02H1-300 | #30 | 0.25 | 2,320 | | |

上記以外のサイズについてはお問い合わせください。

| Tolerance (公差) | | |
|----------------|----|-----|
| D | d | T |
| js16 | H7 | k11 |

ハイスロールカッター SKH51



| Item no. 型番 | D(刃径) | | | |
|----------------|---------|----------------|-----------------------|---------|
| | Ø75 | | | |
| | T 刃幅 | Price 価格(円) | Shape of Flute 刃の形 | d 内径 |
| KN01H1-010-75 | 1.0 | 2,070 | SA | Ø25.4 |
| KN01H1-012-75 | 1.2 | 1,890 | | |
| KN01H1-015-75 | 1.5 | 1,940 | | |
| KN01H1-020-75 | 2.0 | 2,000 | | |
| KN01H1-025-75 | 2.5 | 2,190 | | |
| KN01H1-030-75 | 3.0 | 2,280 | | |
| KN01H1-035-75 | 3.5 | 2,620 | | |
| KN01H1-040-75 | 4.0 | 2,730 | | |

| Item no. 型番 | D(刃径) | | | |
|----------------|---------|----------------|-----------------------|---------|
| | Ø100 | | | |
| | T 刃幅 | Price 価格(円) | Shape of Flute 刃の形 | d 内径 |
| KN01H1-010-100 | 1.0 | 3,210 | SA | Ø25.4 |
| KN01H1-012-100 | 1.2 | 3,320 | | |
| KN01H1-015-100 | 1.5 | 3,350 | | |
| KN01H1-020-100 | 2.0 | 3,430 | | |
| KN01H1-025-100 | 2.5 | 3,440 | | |
| KN01H1-030-100 | 3.0 | 3,530 | | |
| KN01H1-035-100 | 3.5 | 4,370 | | |
| KN01H1-040-100 | 4.0 | 4,560 | | |

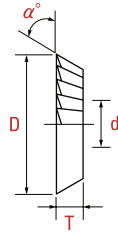
| Item no. 型番 | D(刃径) | | | |
|----------------|---------|----------------|-----------------------|---------|
| | Ø125 | | | |
| | T 刃幅 | Price 価格(円) | Shape of Flute 刃の形 | d 内径 |
| KN01H1-010-125 | 1.0 | 6,630 | SA | Ø25.4 |
| KN01H1-012-125 | 1.2 | 6,810 | | |
| KN01H1-015-125 | 1.5 | 6,980 | | |
| KN01H1-020-125 | 2.0 | 7,090 | | |
| KN01H1-025-125 | 2.5 | 7,160 | | |
| KN01H1-030-125 | 3.0 | 7,370 | | |
| KN01H1-035-125 | 3.5 | 7,860 | | |
| KN01H1-040-125 | 4.0 | 8,030 | | |

| Item no. 型番 | D(刃径) | | | |
|----------------|---------|----------------|-----------------------|---------|
| | Ø150 | | | |
| | T 刃幅 | Price 価格(円) | Shape of Flute 刃の形 | d 内径 |
| KN01H1-010-150 | 1.0 | 9,520 | SA | Ø25.4 |
| KN01H1-012-150 | 1.2 | 9,820 | | |
| KN01H1-015-150 | 1.5 | 10,020 | | |
| KN01H1-020-150 | 2.0 | 10,350 | | |
| KN01H1-025-150 | 2.5 | 10,520 | | |
| KN01H1-030-150 | 3.0 | 10,690 | | |
| KN01H1-035-150 | 3.5 | 10,850 | | |
| KN01H1-040-150 | 4.0 | 11,190 | | |

上記以外のサイズについてはお問い合わせください。

| Tolerance (公差) | | |
|----------------|----|-----|
| D | d | T |
| js16 | H7 | k11 |

ハイスシングル アングルカッター SKH51



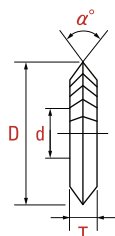
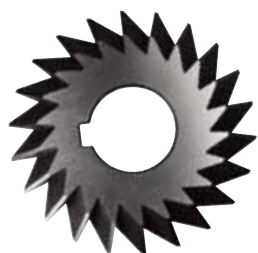
| Item no. 型番 | D(刃径) | | | |
|----------------|----------|----------------|---------|---------|
| | ø75 | | | |
| | α° 角度 | Price 価格(円) | T 刃幅 | d 内径 |
| AC01H1-410-75 | 45° | 8,480 | 10.0 | ø25.4 |
| AC01H1-412-75 | | 8,830 | 12.0 | |
| AC01H1-414-75 | | 9,050 | 14.0 | |
| AC01H1-416-75 | | 9,420 | 16.0 | |
| AC01H1-418-75 | | 9,610 | 18.0 | |
| AC01H1-420-75 | | 10,010 | 20.0 | |
| AC01H1-610-75 | 60° | 8,480 | 10.0 | |
| AC01H1-612-75 | | 8,830 | 12.0 | |
| AC01H1-614-75 | | 9,050 | 14.0 | |
| AC01H1-616-75 | | 9,420 | 16.0 | |
| AC01H1-618-75 | | 9,610 | 18.0 | |
| AC01H1-620-75 | | 10,010 | 20.0 | |

| Item no. 型番 | D(刃径) | | | |
|----------------|----------|----------------|---------|---------|
| | ø100 | | | |
| | α° 角度 | Price 価格(円) | T 刃幅 | d 内径 |
| AC01H1-410-100 | 45° | 11,780 | 10.0 | ø25.4 |
| AC01H1-412-100 | | 12,910 | 12.0 | |
| AC01H1-414-100 | | 13,550 | 14.0 | |
| AC01H1-416-100 | | 15,320 | 16.0 | |
| AC01H1-418-100 | | 17,970 | 18.0 | |
| AC01H1-420-100 | | 18,560 | 20.0 | |
| AC01H1-610-100 | 60° | 11,780 | 10.0 | |
| AC01H1-612-100 | | 12,910 | 12.0 | |
| AC01H1-614-100 | | 13,550 | 14.0 | |
| AC01H1-616-100 | | 15,320 | 16.0 | |
| AC01H1-618-100 | | 17,970 | 18.0 | |
| AC01H1-620-100 | | 18,560 | 20.0 | |

上記以外のサイズについてはお問い合わせください。

| Tolerance (公差) | | |
|----------------|----|----|
| D | d | l |
| js16 | H7 | ±1 |

ハイスダブル アングルカッター SKH51



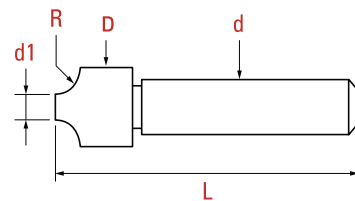
| Item no. 型番 | D(刃径) | | | |
|----------------|----------|----------------|---------|---------|
| | Ø75 | | | |
| | α° 角度 | Price 価格(円) | T 刃幅 | d 内径 |
| AC02H1-410-75 | 45° | 8,480 | 10.0 | Ø25.4 |
| AC02H1-412-75 | | 8,830 | 12.0 | |
| AC02H1-414-75 | | 9,050 | 14.0 | |
| AC02H1-416-75 | | 9,420 | 16.0 | |
| AC02H1-418-75 | | 9,610 | 18.0 | |
| AC02H1-420-75 | | 10,010 | 20.0 | |
| AC02H1-610-75 | | 60° | 8,480 | |
| AC02H1-612-75 | 8,830 | | 12.0 | |
| AC02H1-614-75 | 9,050 | | 14.0 | |
| AC02H1-616-75 | 9,420 | | 16.0 | |
| AC02H1-618-75 | 9,610 | | 18.0 | |
| AC02H1-620-75 | 10,010 | | 20.0 | |
| AC02H1-910-75 | 90° | | 8,480 | |
| AC02H1-912-75 | | 8,830 | 12.0 | |
| AC02H1-914-75 | | 9,050 | 14.0 | |
| AC02H1-916-75 | | 9,420 | 16.0 | |
| AC02H1-918-75 | | 9,610 | 18.0 | |
| AC02H1-920-75 | | 10,010 | 20.0 | |

| Item no. 型番 | D(刃径) | | | |
|----------------|----------|----------------|---------|---------|
| | Ø100 | | | |
| | α° 角度 | Price 価格(円) | T 刃幅 | d 内径 |
| AC02H1-410-100 | 45° | 11,780 | 10.0 | Ø25.4 |
| AC02H1-412-100 | | 12,910 | 12.0 | |
| AC02H1-414-100 | | 13,550 | 14.0 | |
| AC02H1-416-100 | | 15,320 | 16.0 | |
| AC02H1-418-100 | | 17,970 | 18.0 | |
| AC02H1-420-100 | | 18,560 | 20.0 | |
| AC02H1-610-100 | | 60° | 11,780 | |
| AC02H1-612-100 | 12,910 | | 12.0 | |
| AC02H1-614-100 | 13,550 | | 14.0 | |
| AC02H1-616-100 | 15,320 | | 16.0 | |
| AC02H1-618-100 | 17,970 | | 18.0 | |
| AC02H1-620-100 | 18,560 | | 20.0 | |
| AC02H1-910-100 | 90° | | 11,780 | |
| AC02H1-912-100 | | 12,910 | 12.0 | |
| AC02H1-914-100 | | 13,550 | 14.0 | |
| AC02H1-916-100 | | 15,320 | 16.0 | |
| AC02H1-918-100 | | 17,970 | 18.0 | |
| AC02H1-920-100 | | 18,560 | 20.0 | |

上記以外のサイズについてはお問い合わせください。

| Tolerance (公差) | | |
|----------------|----|-----|
| D | d | T |
| js16 | H7 | k11 |

ハイスコーナー ラウンジングカッター SKH55



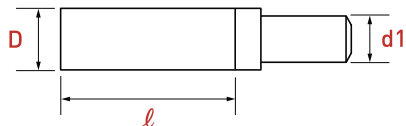
| Item no. 型番 | R 規格 | Price 価格(円) | d1 先端径 | D 大径 | d シャンク 径 | L 全長 |
|----------------|---------|----------------|-----------|---------|----------------|---------|
| CR01H5-010 | 1.0 | 2,640 | 6 | 8 | 10 | 60 |
| CR01H5-015 | 1.5 | 2,670 | 6 | 9 | 10 | 60 |
| CR01H5-020 | 2.0 | 3,000 | 6 | 10 | 10 | 60 |
| CR01H5-025 | 2.5 | 3,030 | 6 | 11 | 10 | 60 |
| CR01H5-030 | 3.0 | 4,150 | 6 | 12 | 12 | 60 |
| CR01H5-035 | 3.5 | 4,190 | 6 | 13 | 12 | 60 |
| CR01H5-040 | 4.0 | 4,730 | 6 | 14 | 12 | 60 |
| CR01H5-045 | 4.5 | 4,770 | 6 | 15 | 12 | 60 |
| CR01H5-050 | 5.0 | 5,680 | 6 | 16 | 12 | 60 |
| CR01H5-060 | 6.0 | 8,440 | 8 | 20 | 16 | 67 |
| CR01H5-070 | 7.0 | 10,180 | 8 | 22 | 16 | 71 |
| CR01H5-080 | 8.0 | 13,440 | 8 | 24 | 16 | 71 |
| CR01H5-090 | 9.0 | 15,240 | 8 | 26 | 25 | 85 |
| CR01H5-100 | 10.0 | 16,890 | 8 | 28 | 25 | 85 |
| CR01H5-110 | 11.0 | 19,150 | 10 | 32 | 25 | 90 |
| CR01H5-120 | 12.0 | 19,430 | 10 | 34 | 25 | 90 |
| CR01H5-130 | 13.0 | 31,660 | 16 | 42 | 25 | 100 |

| Item no. 型番 | R 規格 | Price 価格(円) | d1 先端径 | D 大径 | d シャンク 径 | L 全長 |
|----------------|---------|----------------|-----------|---------|----------------|---------|
| CR01H5-140 | 14.0 | 33,550 | 16 | 44 | 25 | 100 |
| CR01H5-150 | 15.0 | 35,660 | 16 | 46 | 25 | 100 |
| CR01H5-160 | 16.0 | 39,240 | 16 | 48 | 25 | 100 |
| CR01H5-180 | 18.0 | 45,200 | 16 | 52 | 32 | 112 |
| CR01H5-200 | 20.0 | 61,260 | 16 | 56 | 32 | 112 |

上記以外のサイズについてはお問い合わせください。

| Tolerance (公差) | | |
|----------------|----|----|
| D | d | L |
| js16 | h7 | ±1 |

ハイスブローチカッター SKH55



HSS
Co 5%

TiN

| Item no. 型番 | D 刃径 | Price 価格(円) | d1 先端径 | ℓ 有効長 |
|----------------|---------|----------------|-----------|----------|
| BR01H5-110-33 | 11.0 | 7,010 | Ø19.05 | 33 mm |
| BR01H5-120-33 | 12.0 | 7,010 | | |
| BR01H5-130-33 | 13.0 | 7,010 | | |
| BR01H5-140-33 | 14.0 | 7,010 | | |
| BR01H5-150-33 | 15.0 | 7,010 | | |
| BR01H5-160-33 | 16.0 | 6,630 | | |
| BR01H5-170-33 | 17.0 | 6,630 | | |
| BR01H5-175-33 | 17.5 | 6,630 | | |
| BR01H5-180-33 | 18.0 | 5,960 | | |
| BR01H5-190-33 | 19.0 | 5,960 | | |
| BR01H5-200-33 | 20.0 | 5,960 | | |
| BR01H5-210-33 | 21.0 | 5,960 | | |
| BR01H5-215-33 | 21.5 | 6,630 | | |
| BR01H5-220-33 | 22.0 | 6,630 | | |
| BR01H5-225-33 | 22.5 | 6,630 | | |
| BR01H5-230-33 | 23.0 | 6,630 | | |
| BR01H5-235-33 | 23.5 | 6,680 | | |
| BR01H5-240-33 | 24.0 | 6,680 | | |
| BR01H5-245-33 | 24.5 | 6,990 | | |
| BR01H5-250-33 | 25.0 | 6,990 | | |
| BR01H5-255-33 | 25.5 | 7,530 | | |
| BR01H5-260-33 | 26.0 | 7,530 | | |
| BR01H5-265-33 | 26.5 | 8,000 | | |
| BR01H5-270-33 | 27.0 | 8,000 | | |
| BR01H5-280-33 | 28.0 | 8,490 | | |
| BR01H5-290-33 | 29.0 | 8,970 | | |
| BR01H5-300-33 | 30.0 | 9,460 | | |
| BR01H5-310-33 | 31.0 | 10,220 | | |
| BR01H5-320-33 | 32.0 | 10,730 | | |

| Item no. 型番 | D 刃径 | Price 価格(円) | d1 先端径 | ℓ 有効長 |
|----------------|---------|----------------|-----------|----------|
| BR01H5-330-33 | 33.0 | 10,880 | Ø19.05 | 33 mm |
| BR01H5-340-33 | 34.0 | 11,390 | | |
| BR01H5-350-33 | 35.0 | 11,900 | | |
| BR01H5-360-33 | 36.0 | 12,540 | | |
| BR01H5-370-33 | 37.0 | 13,060 | | |
| BR01H5-380-33 | 38.0 | 13,590 | | |
| BR01H5-390-33 | 39.0 | 14,110 | | |
| BR01H5-400-33 | 40.0 | 14,650 | | |
| BR01H5-410-33 | 41.0 | 15,160 | | |
| BR01H5-420-33 | 42.0 | 15,700 | | |
| BR01H5-430-33 | 43.0 | 16,250 | | |
| BR01H5-440-33 | 44.0 | 16,810 | | |
| BR01H5-450-33 | 45.0 | 17,360 | | |
| BR01H5-460-33 | 46.0 | 18,020 | | |
| BR01H5-470-33 | 47.0 | 18,470 | | |
| BR01H5-480-33 | 48.0 | 19,170 | | |
| BR01H5-490-33 | 49.0 | 19,750 | | |
| BR01H5-500-33 | 50.0 | 20,250 | | |
| BR01H5-510-33 | 51.0 | 20,870 | | |
| BR01H5-520-33 | 52.0 | 21,360 | | |
| BR01H5-530-33 | 53.0 | 21,950 | | |
| BR01H5-540-33 | 54.0 | 22,550 | | |
| BR01H5-550-33 | 55.0 | 23,060 | | |
| BR01H5-560-33 | 56.0 | 23,660 | | |
| BR01H5-570-33 | 57.0 | 24,250 | | |
| BR01H5-580-33 | 58.0 | 24,780 | | |
| BR01H5-590-33 | 59.0 | 25,390 | | |
| BR01H5-600-33 | 60.0 | 25,900 | | |

| Item no. 型番 | D 刃径 | Price 価格(円) | d1 先端径 | ℓ 有効長 |
|----------------|---------|----------------|-----------|----------|
| BR01H5-120-53 | 12.0 | 11,300 | Ø19.05 | 53 mm |
| BR01H5-130-53 | 13.0 | 11,300 | | |
| BR01H5-140-53 | 14.0 | 11,300 | | |
| BR01H5-150-53 | 15.0 | 11,300 | | |
| BR01H5-160-53 | 16.0 | 10,690 | | |
| BR01H5-170-53 | 17.0 | 10,690 | | |
| BR01H5-175-53 | 17.5 | 10,690 | | |
| BR01H5-180-53 | 18.0 | 9,620 | | |
| BR01H5-190-53 | 19.0 | 9,620 | | |
| BR01H5-200-53 | 20.0 | 9,620 | | |
| BR01H5-210-53 | 21.0 | 9,620 | | |
| BR01H5-215-53 | 21.5 | 10,150 | | |
| BR01H5-220-53 | 22.0 | 10,150 | | |
| BR01H5-225-53 | 22.5 | 10,150 | | |
| BR01H5-230-53 | 23.0 | 10,150 | | |
| BR01H5-235-53 | 23.5 | 10,200 | | |
| BR01H5-240-53 | 24.0 | 10,200 | | |
| BR01H5-245-53 | 24.5 | 10,770 | | |
| BR01H5-250-53 | 25.0 | 10,770 | | |
| BR01H5-255-53 | 25.5 | 11,310 | | |
| BR01H5-260-53 | 26.0 | 11,310 | | |
| BR01H5-265-53 | 26.5 | 11,780 | | |
| BR01H5-270-53 | 27.0 | 11,780 | | |
| BR01H5-280-53 | 28.0 | 12,260 | | |
| BR01H5-290-53 | 29.0 | 12,750 | | |
| BR01H5-300-53 | 30.0 | 13,240 | | |
| BR01H5-310-53 | 31.0 | 13,820 | | |
| BR01H5-320-53 | 32.0 | 14,360 | | |
| BR01H5-330-53 | 33.0 | 14,520 | | |
| BR01H5-340-53 | 34.0 | 15,020 | | |
| BR01H5-350-53 | 35.0 | 15,530 | | |
| BR01H5-360-53 | 36.0 | 16,180 | | |
| BR01H5-370-53 | 37.0 | 16,700 | | |
| BR01H5-380-53 | 38.0 | 17,220 | | |
| BR01H5-390-53 | 39.0 | 17,750 | | |
| BR01H5-400-53 | 40.0 | 18,280 | | |
| BR01H5-410-53 | 41.0 | 18,800 | | |
| BR01H5-420-53 | 42.0 | 19,340 | | |

| Item no. 型番 | D 刃径 | Price 価格(円) | d1 先端径 | ℓ 有効長 |
|----------------|---------|----------------|-----------|----------|
| BR01H5-430-53 | 43.0 | 19,890 | Ø19.05 | 53 mm |
| BR01H5-440-53 | 44.0 | 20,560 | | |
| BR01H5-450-53 | 45.0 | 21,240 | | |
| BR01H5-460-53 | 46.0 | 22,260 | | |
| BR01H5-470-53 | 47.0 | 22,470 | | |
| BR01H5-480-53 | 48.0 | 23,290 | | |
| BR01H5-490-53 | 49.0 | 24,110 | | |
| BR01H5-500-53 | 50.0 | 25,090 | | |
| BR01H5-510-53 | 51.0 | 25,830 | | |
| BR01H5-520-53 | 52.0 | 26,810 | | |
| BR01H5-530-53 | 53.0 | 27,760 | | |
| BR01H5-540-53 | 54.0 | 28,720 | | |
| BR01H5-550-53 | 55.0 | 30,070 | | |
| BR01H5-560-53 | 56.0 | 30,070 | | |
| BR01H5-570-53 | 57.0 | 30,670 | | |
| BR01H5-580-53 | 58.0 | 31,310 | | |
| BR01H5-590-53 | 59.0 | 31,920 | | |
| BR01H5-600-53 | 60.0 | 32,560 | | |

- ・上記以外のサイズについてはお問い合わせください。
- ・この商品のコートはTINコートのみとなります

| Tolerance (公差) | | |
|----------------|--------|----|
| D | d1 | ℓ |
| 0~-0.03 | Ø19.05 | ±1 |

ブローチカッター用 アクセサリ



Arbor – Inner Coolant

| Item no. 型番 | Purpose 종류 | Type タイプ | Designation 呼び | Price (価格(円)) |
|----------------|-------------------|-------------|-------------------|----------------------|
| | | | | 内部給油 (Inner Coolant) |
| ARBDM-001-IN | For Drill Machine | MT2 | Standard | 19,360 |
| ARBDM-002-IN | | | Long | 20,570 |
| ARBDM-003-IN | | MT3 | Standard | 19,360 |
| ARBDM-004-IN | | | Long | 20,570 |

Arbor – Outer Coolant

| Item no. 型番 | Purpose 用途 | Type タイプ | Designation 呼び | Price (価格(円)) |
|----------------|-----------------------------|-------------|-------------------|----------------------|
| | | | | 外部給油 (Outer Coolant) |
| ARBDM-001-OUT | For Drill Machine | MT2 | Standard | 10,290 |
| ARBDM-002-OUT | | | Long | 11,500 |
| ARBDM-003-OUT | | MT3 | Standard | 10,290 |
| ARBDM-004-OUT | | | Long | 11,500 |
| ARBLM-001-OUT | For Lathe & Milling Machine | Collet | Ø25 | 3,630 |
| ARBLM-002-OUT | | | Ø32 | 4,240 |
| ARBLM-003-OUT | | | Ø42 | 4,840 |
| ARBLM-004-OUT | | MT | MT2 | 3,630 |
| ARBLM-005-OUT | | | MT3 | 4,240 |
| ARBLM-006-OUT | | | MT4 | 4,840 |
| ARBED-001-OUT | For Electric Drill | | Standard | 8,470 |
| ARBOTC-001-OUT | One Touch Connector | | NITTO Type | 7,260 |

Pin

| Item no. 型番 | Standard Type | | | Item no. 型番 | 2 Steps Type | | | Item no. 型番 | Connector | | |
|----------------|-------------------|----------------|---------------|----------------|-------------------|----------------|--------------------|----------------|-------------------|----------------|---------------|
| | Designation 呼び | Price 価格(円) | Remarks 備考 | | Designation 呼び | Price 価格(円) | Remarks 備考 | | Designation 呼び | Price 価格(円) | Remarks 備考 |
| PIN-001-ST | Ø8X80L | 1,030 | 1"(HSS) | PIN-001-2S | Ø6X80L | 1,330 | Ø11, Ø12(HSS) | PIN-001-CN | Ø8X110L | 1,090 | 1"(HSS) |
| PIN-002-ST | Ø8X90L | 1,030 | 1"(Carbide) | PIN-002-2S | Ø6X105L | 1,330 | Ø12(HSS-Long) | PIN-002-CN | Ø8X120L | 1,330 | 1"(Carbide) |
| PIN-003-ST | Ø8X105L | 1,030 | 2" | PIN-003-2S | Ø8X80L | 1,330 | Ø13, Ø16(HSS) | PIN-003-CN | Ø8X135L | 1,330 | 2" |
| PIN-004-ST | Ø8X130L | 1,330 | 3" | PIN-004-2S | Ø8X90L | 1,330 | Ø14, Ø16(Carbide) | | | | |
| PIN-005-ST | Ø8X155L | 1,570 | 4" | PIN-005-2S | Ø8X105L | 1,330 | Ø13, Ø16(HSS-Long) | | | | |

上記以外のサイズについてはお問い合わせください。

TC01H1, TA01H1, TA02H1, TS01H1, TS02H2, Ts03H1 - HSS Cutters

| Materials | Carbon Steels | | Alloy steel | | Cast Iron | | Stainless Steel | | Aluminum Alloys | |
|---------------|---------------|------|-------------|------|-----------|------|-----------------|------|-----------------|------|
| Cutting speed | 115 | | 58 | | 90 | | 58 | | 300 | |
| 외경 | RPM | Feed | RPM | Feed | RPM | Feed | RPM | Feed | RPM | Feed |
| 10.0 | 1,116 | 91 | 563 | 34 | 873 | 71 | 563 | 23 | 2,911 | 355 |
| 20.0 | 558 | 57 | 281 | 21 | 437 | 44 | 281 | 14 | 1,455 | 222 |
| 30.0 | 372 | 45 | 188 | 17 | 291 | 35 | 188 | 11 | 970 | 177 |
| 40.0 | 279 | 40 | 141 | 15 | 218 | 31 | 141 | 10 | 728 | 155 |
| 50.0 | 223 | 36 | 113 | 14 | 175 | 28 | 113 | 9 | 582 | 142 |

RPM = rev./min. Feed = min/rev.

CR01H9 - HSS Co5% Corner Rounding Cutters

| Work materials | Aluminum | | Carbon Steels & Alloy Steels | | | | | |
|----------------|----------|------|------------------------------|------|---------------------------|------|----------------------------|------|
| | | | <500 N/mm ² | | <HRC20 | | HRC20 ~ HRC35 | |
| | | | | | 500~800 N/mm ² | | 800~1100 N/mm ² | |
| Diameter | RPM | Feed | RPM | Feed | RPM | Feed | RPM | Feed |
| R2 | 2,800 | 220 | 630 | 50 | 470 | 30 | 380 | 30 |
| R3 | 2,400 | 210 | 530 | 45 | 390 | 30 | 315 | 30 |
| R4 | 200 | 200 | 450 | 45 | 330 | 30 | 270 | 25 |
| R5 | 1,600 | 200 | 350 | 40 | 260 | 30 | 210 | 25 |
| R6 | 1,400 | 190 | 310 | 40 | 230 | 30 | 185 | 25 |
| R8 | 1,200 | 180 | 260 | 40 | 190 | 30 | 155 | 25 |
| R10 | 950 | 170 | 210 | 35 | 155 | 25 | 125 | 25 |

RPM = rev./min. Feed = min/rev.