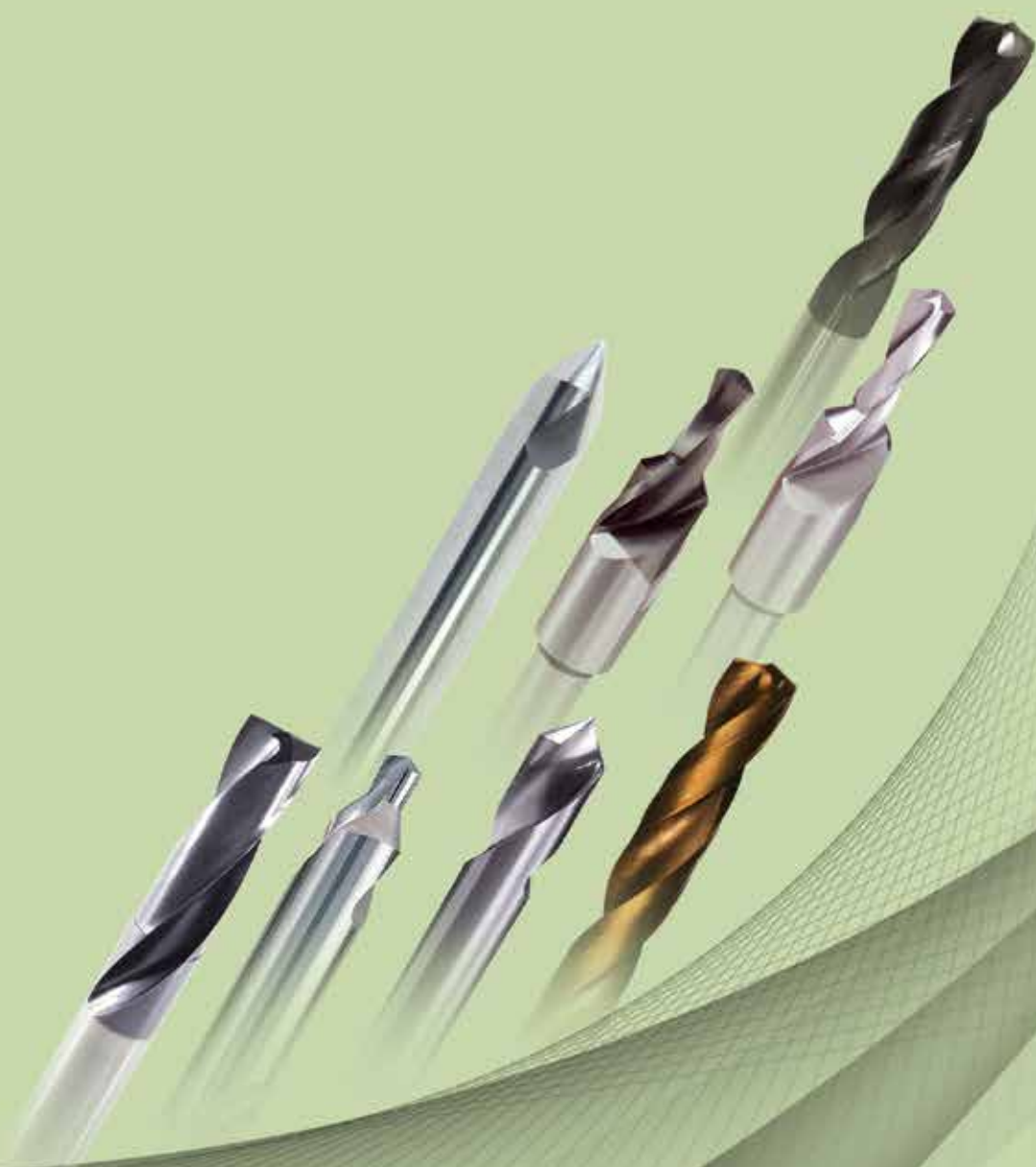
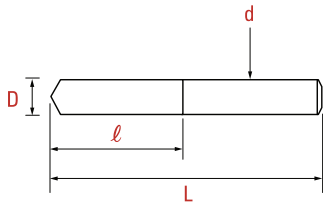


DYC BEST TOTAL TOOLS

超硬ドリル



超硬ドリル [ラセンポイント型]



| Item no. 型番 | D 刃径 | Price 価格(円) | ℓ 刃長 | L 全長 | d シャンク径 |
|----------------|---------|----------------|---------|---------|------------|
| DR01CA-030 | 3.0 | 1,540 | 20 | 55 | 4 |
| DR01CA-031 | 3.1 | 1,540 | 20 | 55 | 4 |
| DR01CA-032 | 3.2 | 1,540 | 20 | 55 | 4 |
| DR01CA-033 | 3.3 | 1,540 | 20 | 55 | 4 |
| DR01CA-034 | 3.4 | 1,540 | 20 | 55 | 4 |
| DR01CA-035 | 3.5 | 1,540 | 20 | 55 | 4 |
| DR01CA-036 | 3.6 | 1,540 | 25 | 55 | 4 |
| DR01CA-037 | 3.7 | 1,540 | 25 | 55 | 4 |
| DR01CA-038 | 3.8 | 1,540 | 25 | 55 | 4 |
| DR01CA-039 | 3.9 | 1,540 | 25 | 55 | 4 |
| DR01CA-040 | 4.0 | 1,540 | 25 | 55 | 4 |
| DR01CA-041 | 4.1 | 1,540 | 25 | 55 | 4 |
| DR01CA-042 | 4.2 | 1,930 | 32 | 62 | 5 |
| DR01CA-043 | 4.3 | 1,930 | 32 | 62 | 5 |
| DR01CA-044 | 4.4 | 1,930 | 32 | 62 | 5 |
| DR01CA-045 | 4.5 | 1,930 | 32 | 62 | 5 |
| DR01CA-046 | 4.6 | 1,930 | 32 | 62 | 5 |
| DR01CA-047 | 4.7 | 1,930 | 32 | 62 | 5 |
| DR01CA-048 | 4.8 | 1,930 | 32 | 62 | 5 |
| DR01CA-049 | 4.9 | 1,930 | 32 | 62 | 5 |
| DR01CA-050 | 5.0 | 1,930 | 32 | 62 | 5 |
| DR01CA-051 | 5.1 | 1,930 | 32 | 62 | 5 |
| DR01CA-052 | 5.2 | 2,390 | 36 | 66 | 6 |
| DR01CA-053 | 5.3 | 2,390 | 36 | 66 | 6 |
| DR01CA-054 | 5.4 | 2,390 | 36 | 66 | 6 |

| Item no. 型番 | D 刃径 | Price 価格(円) | ℓ 刃長 | L 全長 | d シャンク径 |
|----------------|---------|----------------|---------|---------|------------|
| DR01CA-055 | 5.5 | 2,390 | 36 | 66 | 6 |
| DR01CA-056 | 5.6 | 2,390 | 36 | 66 | 6 |
| DR01CA-057 | 5.7 | 2,390 | 36 | 66 | 6 |
| DR01CA-058 | 5.8 | 2,390 | 36 | 66 | 6 |
| DR01CA-059 | 5.9 | 2,390 | 36 | 66 | 6 |
| DR01CA-060 | 6.0 | 2,390 | 36 | 66 | 6 |
| DR01CA-061 | 6.1 | 2,390 | 36 | 66 | 6 |
| DR01CA-062 | 6.2 | 3,020 | 42 | 74 | 7 |
| DR01CA-063 | 6.3 | 3,020 | 42 | 74 | 7 |
| DR01CA-064 | 6.4 | 3,020 | 42 | 74 | 7 |
| DR01CA-065 | 6.5 | 3,020 | 42 | 74 | 7 |
| DR01CA-066 | 6.6 | 3,020 | 42 | 74 | 7 |
| DR01CA-067 | 6.7 | 3,020 | 42 | 74 | 7 |
| DR01CA-068 | 6.8 | 3,020 | 42 | 74 | 7 |
| DR01CA-069 | 6.9 | 3,020 | 42 | 74 | 7 |
| DR01CA-070 | 7.0 | 3,020 | 42 | 74 | 7 |
| DR01CA-071 | 7.1 | 3,020 | 42 | 74 | 7 |
| DR01CA-072 | 7.2 | 3,740 | 46 | 79 | 8 |
| DR01CA-073 | 7.3 | 3,740 | 46 | 79 | 8 |
| DR01CA-074 | 7.4 | 3,740 | 46 | 79 | 8 |
| DR01CA-075 | 7.5 | 3,740 | 46 | 79 | 8 |
| DR01CA-076 | 7.6 | 3,740 | 46 | 79 | 8 |
| DR01CA-077 | 7.7 | 3,740 | 46 | 79 | 8 |
| DR01CA-078 | 7.8 | 3,740 | 46 | 79 | 8 |
| DR01CA-079 | 7.9 | 3,740 | 46 | 79 | 8 |

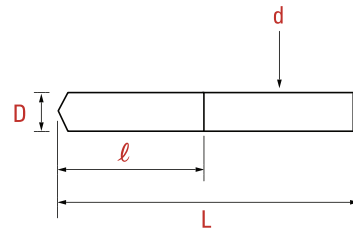
| Item no. 型番 | D 刃径 | Price 価格(円) | ℓ 刃長 | L 全長 | d シャンク径 |
|----------------|---------|----------------|---------|---------|------------|
| DR01CA-080 | 8.0 | 3,740 | 46 | 79 | 8 |
| DR01CA-081 | 8.1 | 3,740 | 46 | 79 | 8 |
| DR01CA-082 | 8.2 | 4,460 | 50 | 84 | 9 |
| DR01CA-083 | 8.3 | 4,460 | 50 | 84 | 9 |
| DR01CA-084 | 8.4 | 4,460 | 50 | 84 | 9 |
| DR01CA-085 | 8.5 | 4,460 | 50 | 84 | 9 |
| DR01CA-086 | 8.6 | 4,460 | 50 | 84 | 9 |
| DR01CA-087 | 8.7 | 4,460 | 50 | 84 | 9 |
| DR01CA-088 | 8.8 | 4,460 | 50 | 84 | 9 |
| DR01CA-089 | 8.9 | 4,460 | 50 | 84 | 9 |
| DR01CA-090 | 9.0 | 4,460 | 50 | 84 | 9 |
| DR01CA-091 | 9.1 | 4,460 | 50 | 84 | 9 |
| DR01CA-092 | 9.2 | 5,590 | 53 | 89 | 10 |
| DR01CA-093 | 9.3 | 5,590 | 53 | 89 | 10 |
| DR01CA-094 | 9.4 | 5,590 | 53 | 89 | 10 |
| DR01CA-095 | 9.5 | 5,590 | 53 | 89 | 10 |
| DR01CA-096 | 9.6 | 5,590 | 53 | 89 | 10 |
| DR01CA-097 | 9.7 | 5,590 | 53 | 89 | 10 |
| DR01CA-098 | 9.8 | 5,590 | 53 | 89 | 10 |
| DR01CA-099 | 9.9 | 5,590 | 53 | 89 | 10 |
| DR01CA-100 | 10.0 | 5,590 | 53 | 89 | 10 |
| DR01CA-101 | 10.1 | 5,590 | 53 | 89 | 10 |
| DR01CA-102 | 10.2 | 5,880 | 55 | 95 | 11 |
| DR01CA-103 | 10.3 | 5,880 | 55 | 95 | 11 |
| DR01CA-104 | 10.4 | 5,880 | 55 | 95 | 11 |
| DR01CA-105 | 10.5 | 5,880 | 55 | 95 | 11 |
| DR01CA-106 | 10.6 | 5,880 | 55 | 95 | 11 |
| DR01CA-107 | 10.7 | 5,880 | 55 | 95 | 11 |
| DR01CA-108 | 10.8 | 5,880 | 55 | 95 | 11 |
| DR01CA-109 | 10.9 | 5,880 | 55 | 95 | 11 |
| DR01CA-110 | 11.0 | 5,880 | 55 | 95 | 11 |
| DR01CA-111 | 11.1 | 5,880 | 55 | 95 | 11 |
| DR01CA-112 | 11.2 | 7,290 | 62 | 102 | 12 |
| DR01CA-113 | 11.3 | 7,290 | 62 | 102 | 12 |
| DR01CA-114 | 11.4 | 7,290 | 62 | 102 | 12 |
| DR01CA-115 | 11.5 | 7,290 | 62 | 102 | 12 |

| Item no. 型番 | D 刃径 | Price 価格(円) | ℓ 刃長 | L 全長 | d シャンク径 |
|----------------|---------|----------------|---------|---------|------------|
| DR01CA-116 | 11.6 | 7,290 | 62 | 102 | 12 |
| DR01CA-117 | 11.7 | 7,290 | 62 | 102 | 12 |
| DR01CA-118 | 11.8 | 7,290 | 62 | 102 | 12 |
| DR01CA-119 | 11.9 | 7,290 | 62 | 102 | 12 |
| DR01CA-120 | 12.0 | 7,290 | 62 | 102 | 12 |
| DR01CA-121 | 12.1 | 7,290 | 62 | 102 | 12 |
| DR01CA-122 | 12.2 | 8,900 | 62 | 102 | 13 |
| DR01CA-123 | 12.3 | 8,900 | 62 | 102 | 13 |
| DR01CA-124 | 12.4 | 8,900 | 62 | 102 | 13 |
| DR01CA-125 | 12.5 | 8,900 | 62 | 102 | 13 |
| DR01CA-126 | 12.6 | 8,900 | 62 | 102 | 13 |
| DR01CA-127 | 12.7 | 8,900 | 62 | 102 | 13 |
| DR01CA-128 | 12.8 | 8,900 | 62 | 102 | 13 |
| DR01CA-129 | 12.9 | 8,900 | 62 | 102 | 13 |
| DR01CA-130 | 13.0 | 8,900 | 62 | 102 | 13 |
| DR01CA-135 | 13.5 | 10,570 | 64 | 107 | 14 |
| DR01CA-140 | 14.0 | 10,570 | 64 | 107 | 14 |
| DR01CA-145 | 14.5 | 13,100 | 67 | 111 | 15 |
| DR01CA-150 | 15.0 | 13,100 | 67 | 111 | 15 |
| DR01CA-155 | 15.5 | 14,620 | 69 | 115 | 16 |
| DR01CA-160 | 16.0 | 14,620 | 69 | 115 | 16 |
| DR01CA-165 | 16.5 | 15,640 | 71 | 119 | 17 |
| DR01CA-170 | 17.0 | 15,640 | 71 | 119 | 17 |
| DR01CA-175 | 17.5 | 21,080 | 74 | 123 | 18 |
| DR01CA-180 | 18.0 | 21,080 | 74 | 123 | 18 |
| DR01CA-185 | 18.5 | 23,070 | 76 | 127 | 19 |
| DR01CA-190 | 19.0 | 23,070 | 76 | 127 | 19 |
| DR01CA-195 | 19.5 | 26,060 | 80 | 131 | 20 |
| DR01CA-200 | 20.0 | 26,060 | 80 | 131 | 20 |

- ・上記以外のサイズについてはお問い合わせください。
- ・この商品のコートはTiAlNコートのみとなります

| Tolerance (公差) | | |
|----------------|----|----|
| D | d | L |
| h7 | h6 | ±1 |

超硬ドリル [汎用タイプ]



| Item no. 型番 | D 刃径 | Price 価格(円) | ℓ 刃長 | L 全長 | d シャンク径 |
|----------------|---------|----------------|---------|---------|------------|
| DR02CA-020 | 2.0 | 1,080 | 20 | 45 | 2.0 |
| DR02CA-021 | 2.1 | 1,080 | 20 | 45 | 2.1 |
| DR02CA-022 | 2.2 | 1,080 | 20 | 45 | 2.2 |
| DR02CA-023 | 2.3 | 1,080 | 20 | 45 | 2.3 |
| DR02CA-024 | 2.4 | 1,080 | 20 | 45 | 2.4 |
| DR02CA-025 | 2.5 | 1,080 | 22 | 45 | 2.5 |
| DR02CA-026 | 2.6 | 1,080 | 22 | 45 | 2.6 |
| DR02CA-027 | 2.7 | 1,080 | 22 | 45 | 2.7 |
| DR02CA-028 | 2.8 | 1,080 | 22 | 45 | 2.8 |
| DR02CA-029 | 2.9 | 1,080 | 22 | 45 | 2.9 |
| DR02CA-030 | 3.0 | 970 | 25 | 50 | 3.0 |
| DR02CA-031 | 3.1 | 1,030 | 25 | 50 | 3.1 |
| DR02CA-032 | 3.2 | 1,030 | 25 | 50 | 3.2 |
| DR02CA-033 | 3.3 | 1,030 | 28 | 50 | 3.3 |
| DR02CA-034 | 3.4 | 1,030 | 28 | 50 | 3.4 |
| DR02CA-035 | 3.5 | 1,080 | 28 | 50 | 3.5 |
| DR02CA-036 | 3.6 | 1,160 | 30 | 55 | 3.6 |
| DR02CA-037 | 3.7 | 1,150 | 30 | 55 | 3.7 |
| DR02CA-038 | 3.8 | 1,150 | 30 | 55 | 3.8 |
| DR02CA-039 | 3.9 | 1,150 | 30 | 55 | 3.9 |

| Item no. 型番 | D 刃径 | Price 価格(円) | ℓ 刃長 | L 全長 | d シャンク径 |
|----------------|---------|----------------|---------|---------|------------|
| DR02CA-040 | 4.0 | 1,230 | 30 | 55 | 4.0 |
| DR02CA-041 | 4.1 | 1,330 | 34 | 60 | 4.1 |
| DR02CA-042 | 4.2 | 1,330 | 34 | 60 | 4.2 |
| DR02CA-043 | 4.3 | 1,330 | 34 | 60 | 4.3 |
| DR02CA-044 | 4.4 | 1,330 | 34 | 60 | 4.4 |
| DR02CA-045 | 4.5 | 1,440 | 34 | 60 | 4.5 |
| DR02CA-046 | 4.6 | 1,650 | 38 | 65 | 4.6 |
| DR02CA-047 | 4.7 | 1,650 | 38 | 65 | 4.7 |
| DR02CA-048 | 4.8 | 1,650 | 38 | 65 | 4.8 |
| DR02CA-049 | 4.9 | 1,650 | 38 | 65 | 4.9 |
| DR02CA-050 | 5.0 | 1,840 | 38 | 65 | 5.0 |
| DR02CA-051 | 5.1 | 2,100 | 38 | 65 | 5.1 |
| DR02CA-052 | 5.2 | 2,100 | 38 | 65 | 5.2 |
| DR02CA-053 | 5.3 | 2,100 | 38 | 65 | 5.3 |
| DR02CA-054 | 5.4 | 2,100 | 38 | 65 | 5.4 |
| DR02CA-055 | 5.5 | 2,260 | 38 | 65 | 5.5 |
| DR02CA-056 | 5.6 | 2,470 | 40 | 75 | 5.6 |
| DR02CA-057 | 5.7 | 2,470 | 40 | 75 | 5.7 |
| DR02CA-058 | 5.8 | 2,470 | 40 | 75 | 5.8 |
| DR02CA-059 | 5.9 | 2,470 | 40 | 75 | 5.9 |

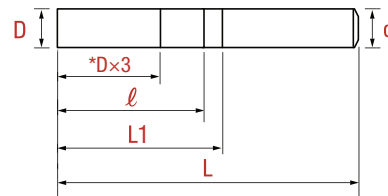
| Item no. 型番 | D 刃径 | Price 価格(円) | ℓ 刃長 | L 全長 | d シャンク径 |
|----------------|---------|----------------|---------|---------|------------|
| DR02CA-060 | 6.0 | 2,600 | 40 | 75 | 6.0 |
| DR02CA-061 | 6.1 | 2,870 | 40 | 75 | 6.1 |
| DR02CA-062 | 6.2 | 2,870 | 40 | 75 | 6.2 |
| DR02CA-063 | 6.3 | 2,870 | 40 | 75 | 6.3 |
| DR02CA-064 | 6.4 | 2,870 | 40 | 75 | 6.4 |
| DR02CA-065 | 6.5 | 2,970 | 40 | 75 | 6.5 |
| DR02CA-066 | 6.6 | 3,200 | 46 | 80 | 6.6 |
| DR02CA-067 | 6.7 | 3,200 | 46 | 80 | 6.7 |
| DR02CA-068 | 6.8 | 3,200 | 46 | 80 | 6.8 |
| DR02CA-069 | 6.9 | 3,200 | 46 | 80 | 6.9 |
| DR02CA-070 | 7.0 | 3,430 | 46 | 80 | 7.0 |
| DR02CA-071 | 7.1 | 3,630 | 46 | 80 | 7.1 |
| DR02CA-072 | 7.2 | 3,630 | 46 | 80 | 7.2 |
| DR02CA-073 | 7.3 | 3,630 | 46 | 80 | 7.3 |
| DR02CA-074 | 7.4 | 3,630 | 46 | 80 | 7.4 |
| DR02CA-075 | 7.5 | 3,780 | 46 | 80 | 7.5 |
| DR02CA-076 | 7.6 | 3,950 | 46 | 80 | 7.6 |
| DR02CA-077 | 7.7 | 3,950 | 46 | 80 | 7.7 |
| DR02CA-078 | 7.8 | 3,950 | 46 | 80 | 7.8 |
| DR02CA-079 | 7.9 | 3,950 | 46 | 80 | 7.9 |
| DR02CA-080 | 8.0 | 4,150 | 50 | 85 | 8.0 |
| DR02CA-081 | 8.1 | 4,280 | 50 | 85 | 8.1 |
| DR02CA-082 | 8.2 | 4,280 | 50 | 85 | 8.2 |
| DR02CA-083 | 8.3 | 4,280 | 50 | 85 | 8.3 |
| DR02CA-084 | 8.4 | 4,280 | 50 | 85 | 8.4 |
| DR02CA-085 | 8.5 | 4,460 | 50 | 85 | 8.5 |
| DR02CA-086 | 8.6 | 4,760 | 50 | 85 | 8.6 |
| DR02CA-087 | 8.7 | 4,760 | 50 | 85 | 8.7 |
| DR02CA-088 | 8.8 | 4,760 | 50 | 85 | 8.8 |
| DR02CA-089 | 8.9 | 4,760 | 50 | 85 | 8.9 |
| DR02CA-090 | 9.0 | 4,890 | 50 | 85 | 9.0 |
| DR02CA-091 | 9.1 | 5,370 | 50 | 85 | 9.1 |
| DR02CA-092 | 9.2 | 5,370 | 50 | 85 | 9.2 |
| DR02CA-093 | 9.3 | 5,370 | 50 | 85 | 9.3 |
| DR02CA-094 | 9.4 | 5,370 | 50 | 85 | 9.4 |
| DR02CA-095 | 9.5 | 5,560 | 50 | 85 | 9.5 |
| DR02CA-096 | 9.6 | 5,720 | 50 | 85 | 9.6 |
| DR02CA-097 | 9.7 | 5,720 | 50 | 85 | 9.7 |
| DR02CA-098 | 9.8 | 5,720 | 50 | 85 | 9.8 |
| DR02CA-099 | 9.9 | 5,720 | 50 | 85 | 9.9 |
| DR02CA-100 | 10.0 | 5,970 | 50 | 100 | 10.0 |

| Item no. 型番 | D 刃径 | Price 価格(円) | ℓ 刃長 | L 全長 | d シャンク径 |
|----------------|---------|----------------|---------|---------|------------|
| DR02CA-101 | 10.1 | 6,010 | 50 | 100 | 10.1 |
| DR02CA-102 | 10.2 | 6,010 | 50 | 100 | 10.2 |
| DR02CA-103 | 10.3 | 6,010 | 50 | 100 | 10.3 |
| DR02CA-104 | 10.4 | 6,010 | 50 | 100 | 10.4 |
| DR02CA-105 | 10.5 | 6,010 | 60 | 115 | 10.5 |
| DR02CA-106 | 10.6 | 6,310 | 60 | 115 | 10.6 |
| DR02CA-107 | 10.7 | 6,310 | 60 | 115 | 10.7 |
| DR02CA-108 | 10.8 | 6,310 | 60 | 115 | 10.8 |
| DR02CA-109 | 10.9 | 6,310 | 60 | 115 | 10.9 |
| DR02CA-110 | 11.0 | 6,750 | 60 | 115 | 11.0 |
| DR02CA-111 | 11.1 | 6,860 | 60 | 115 | 11.1 |
| DR02CA-112 | 11.2 | 6,860 | 60 | 115 | 11.2 |
| DR02CA-113 | 11.3 | 6,860 | 60 | 115 | 11.3 |
| DR02CA-114 | 11.4 | 6,860 | 65 | 115 | 11.4 |
| DR02CA-115 | 11.5 | 6,860 | 65 | 120 | 11.5 |
| DR02CA-116 | 11.6 | 7,240 | 65 | 120 | 11.6 |
| DR02CA-117 | 11.7 | 7,240 | 65 | 120 | 11.7 |
| DR02CA-118 | 11.8 | 7,240 | 65 | 120 | 11.8 |
| DR02CA-119 | 11.9 | 7,240 | 65 | 120 | 11.9 |
| DR02CA-120 | 12.0 | 7,240 | 65 | 120 | 12.0 |
| DR02CA-121 | 12.1 | 7,410 | 65 | 120 | 12.1 |
| DR02CA-122 | 12.2 | 7,410 | 65 | 120 | 12.2 |
| DR02CA-123 | 12.3 | 7,410 | 65 | 120 | 12.3 |
| DR02CA-124 | 12.4 | 7,410 | 65 | 120 | 12.4 |
| DR02CA-125 | 12.5 | 7,410 | 65 | 125 | 12.5 |
| DR02CA-126 | 12.6 | 7,680 | 65 | 125 | 12.6 |
| DR02CA-127 | 12.7 | 7,680 | 65 | 125 | 12.7 |
| DR02CA-128 | 12.8 | 7,680 | 65 | 125 | 12.8 |
| DR02CA-129 | 12.9 | 7,680 | 65 | 125 | 12.9 |
| DR02CA-130 | 13.0 | 7,880 | 65 | 125 | 13.0 |
| DR02CA-135 | 13.5 | 11,230 | 65 | 125 | 13.5 |
| DR02CA-140 | 14.0 | 13,160 | 65 | 125 | 14.0 |

上記以外のサイズについてはお問い合わせください。

| Tolerance (公差) | | |
|----------------|----|----|
| D | d | L |
| h8 | h6 | ±1 |

NEW 超硬フラットドリル



*マージン長(D×3)

| Item no. 型番 | D 刃径 | Price 価格(円) | ℓ 刃長 | L1 首長 | L 全長 | d シャンク径 |
|----------------|---------|----------------|---------|----------|---------|------------|
| DR03CA-030 | 3.0 | 2,450 | 20 | 21.5 | 55 | 4 |
| DR03CA-031 | 3.1 | 2,450 | 20 | 21.5 | 55 | 4 |
| DR03CA-032 | 3.2 | 2,450 | 20 | 21.5 | 55 | 4 |
| DR03CA-033 | 3.3 | 2,450 | 20 | 21.5 | 55 | 4 |
| DR03CA-034 | 3.4 | 2,450 | 20 | 21.5 | 55 | 4 |
| DR03CA-035 | 3.5 | 2,450 | 20 | 21.5 | 55 | 4 |
| DR03CA-036 | 3.6 | 2,450 | 25 | 25 | 55 | 4 |
| DR03CA-037 | 3.7 | 2,450 | 25 | 25 | 55 | 4 |
| DR03CA-038 | 3.8 | 2,450 | 25 | 25 | 55 | 4 |
| DR03CA-039 | 3.9 | 2,450 | 25 | 25 | 55 | 4 |
| DR03CA-040 | 4.0 | 2,450 | 25 | 25 | 55 | 4 |
| DR03CA-041 | 4.1 | 2,450 | 25 | 25 | 55 | 4 |
| DR03CA-042 | 4.2 | 3,260 | 26.5 | 32 | 65 | 5 |
| DR03CA-043 | 4.3 | 3,260 | 26.5 | 32 | 65 | 5 |
| DR03CA-044 | 4.4 | 3,260 | 26.5 | 32 | 65 | 5 |
| DR03CA-045 | 4.5 | 3,260 | 26.5 | 32 | 65 | 5 |
| DR03CA-046 | 4.6 | 3,260 | 26.5 | 32 | 65 | 5 |

*マージン長(D×3)

| Item no. 型番 | D 刃径 | Price 価格(円) | ℓ 刃長 | L1 首長 | L 全長 | d シャンク径 |
|----------------|---------|----------------|---------|----------|---------|------------|
| DR03CA-047 | 4.7 | 3,260 | 30.5 | 32 | 65 | 5 |
| DR03CA-048 | 4.8 | 3,260 | 30.5 | 32 | 65 | 5 |
| DR03CA-049 | 4.9 | 3,260 | 30.5 | 32 | 65 | 5 |
| DR03CA-050 | 5.0 | 3,260 | 30.5 | 32 | 65 | 5 |
| DR03CA-051 | 5.1 | 3,260 | 30.5 | 32 | 65 | 5 |
| DR03CA-052 | 5.2 | 4,070 | 33 | 36 | 65 | 6 |
| DR03CA-053 | 5.3 | 4,070 | 33 | 36 | 65 | 6 |
| DR03CA-054 | 5.4 | 4,070 | 33 | 36 | 65 | 6 |
| DR03CA-055 | 5.5 | 4,070 | 33 | 36 | 65 | 6 |
| DR03CA-056 | 5.6 | 4,070 | 33 | 36 | 65 | 6 |
| DR03CA-057 | 5.7 | 4,070 | 35 | 36 | 65 | 6 |
| DR03CA-058 | 5.8 | 4,070 | 35 | 36 | 65 | 6 |
| DR03CA-059 | 5.9 | 4,070 | 35 | 36 | 65 | 6 |
| DR03CA-060 | 6.0 | 4,070 | 35 | 36 | 65 | 6 |
| DR03CA-061 | 6.1 | 4,070 | 35 | 36 | 65 | 6 |
| DR03CA-062 | 6.2 | 6,820 | 37 | 42 | 75 | 7 |
| DR03CA-063 | 6.3 | 6,820 | 37 | 42 | 75 | 7 |

*マージン長(D×3)

| Item no. 型番 | D 刃径 | Price 価格(円) | ℓ 刃長 | L1 首長 | L 全長 | d シャンク径 |
|----------------|---------|----------------|---------|----------|---------|------------|
| DR03CA-064 | 6.4 | 6,820 | 37 | 42 | 75 | 7 |
| DR03CA-065 | 6.5 | 6,820 | 37 | 42 | 75 | 7 |
| DR03CA-066 | 6.6 | 6,820 | 37 | 42 | 75 | 7 |
| DR03CA-067 | 6.7 | 6,820 | 38 | 42 | 75 | 7 |
| DR03CA-068 | 6.8 | 6,820 | 38 | 42 | 75 | 7 |
| DR03CA-069 | 6.9 | 6,820 | 38 | 42 | 75 | 7 |
| DR03CA-070 | 7.0 | 6,820 | 38 | 42 | 75 | 7 |
| DR03CA-071 | 7.1 | 6,820 | 38 | 42 | 75 | 7 |
| DR03CA-072 | 7.2 | 7,890 | 40 | 46 | 80 | 8 |
| DR03CA-073 | 7.3 | 7,890 | 40 | 46 | 80 | 8 |
| DR03CA-074 | 7.4 | 7,890 | 40 | 46 | 80 | 8 |
| DR03CA-075 | 7.5 | 7,890 | 40 | 46 | 80 | 8 |
| DR03CA-076 | 7.6 | 7,890 | 40 | 46 | 80 | 8 |
| DR03CA-077 | 7.7 | 7,890 | 42 | 46 | 80 | 8 |
| DR03CA-078 | 7.8 | 7,890 | 42 | 46 | 80 | 8 |
| DR03CA-079 | 7.9 | 7,890 | 42 | 46 | 80 | 8 |
| DR03CA-080 | 8.0 | 7,890 | 42 | 46 | 80 | 8 |
| DR03CA-081 | 8.1 | 7,890 | 42 | 46 | 80 | 8 |
| DR03CA-082 | 8.2 | 9,570 | 45 | 50 | 85 | 9 |
| DR03CA-083 | 8.3 | 9,570 | 45 | 50 | 85 | 9 |
| DR03CA-084 | 8.4 | 9,570 | 45 | 50 | 85 | 9 |
| DR03CA-085 | 8.5 | 9,570 | 45 | 50 | 85 | 9 |
| DR03CA-086 | 8.6 | 9,570 | 45 | 50 | 85 | 9 |
| DR03CA-087 | 8.7 | 9,570 | 47 | 50 | 85 | 9 |
| DR03CA-088 | 8.8 | 9,570 | 47 | 50 | 85 | 9 |
| DR03CA-089 | 8.9 | 9,570 | 47 | 50 | 85 | 9 |
| DR03CA-090 | 9.0 | 9,570 | 47 | 50 | 85 | 9 |
| DR03CA-091 | 9.1 | 9,570 | 47 | 50 | 85 | 9 |
| DR03CA-092 | 9.2 | 11,030 | 49 | 53 | 90 | 10 |
| DR03CA-093 | 9.3 | 11,030 | 49 | 53 | 90 | 10 |
| DR03CA-094 | 9.4 | 11,030 | 49 | 53 | 90 | 10 |
| DR03CA-095 | 9.5 | 11,030 | 49 | 53 | 90 | 10 |
| DR03CA-096 | 9.6 | 11,030 | 49 | 53 | 90 | 10 |
| DR03CA-097 | 9.7 | 11,030 | 49 | 53 | 90 | 10 |
| DR03CA-098 | 9.8 | 11,030 | 49 | 53 | 90 | 10 |
| DR03CA-099 | 9.9 | 11,030 | 49 | 53 | 90 | 10 |
| DR03CA-100 | 10.0 | 11,030 | 49 | 53 | 90 | 10 |

*マージン長(D×3)

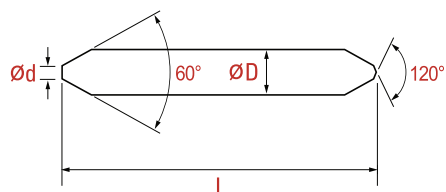
| Item no. 型番 | D 刃径 | Price 価格(円) | ℓ 刃長 | L1 首長 | L 全長 | d シャンク径 |
|----------------|---------|----------------|---------|----------|---------|------------|
| DR03CA-101 | 10.1 | 11,030 | 49 | 53 | 90 | 10 |
| DR03CA-102 | 10.2 | 13,580 | 51 | 55 | 95 | 11 |
| DR03CA-103 | 10.3 | 13,580 | 51 | 55 | 95 | 11 |
| DR03CA-104 | 10.4 | 13,580 | 51 | 55 | 95 | 11 |
| DR03CA-105 | 10.5 | 13,580 | 51 | 55 | 95 | 11 |
| DR03CA-106 | 10.6 | 13,580 | 51 | 55 | 95 | 11 |
| DR03CA-107 | 10.7 | 13,580 | 53 | 55 | 95 | 11 |
| DR03CA-108 | 10.8 | 13,580 | 53 | 55 | 95 | 11 |
| DR03CA-109 | 10.9 | 13,580 | 53 | 55 | 95 | 11 |
| DR03CA-110 | 11.0 | 13,580 | 53 | 55 | 95 | 11 |
| DR03CA-111 | 11.1 | 13,580 | 53 | 55 | 95 | 11 |
| DR03CA-112 | 11.2 | 15,020 | 55 | 62 | 105 | 12 |
| DR03CA-113 | 11.3 | 15,020 | 55 | 62 | 105 | 12 |
| DR03CA-114 | 11.4 | 15,020 | 55 | 62 | 105 | 12 |
| DR03CA-115 | 11.5 | 15,020 | 55 | 62 | 105 | 12 |
| DR03CA-116 | 11.6 | 15,020 | 55 | 62 | 105 | 12 |
| DR03CA-117 | 11.7 | 15,020 | 57 | 62 | 105 | 12 |
| DR03CA-118 | 11.8 | 15,020 | 57 | 62 | 105 | 12 |
| DR03CA-119 | 11.9 | 15,020 | 57 | 62 | 105 | 12 |
| DR03CA-120 | 12.0 | 15,020 | 57 | 62 | 105 | 12 |
| DR03CA-121 | 12.1 | 15,020 | 57 | 62 | 105 | 12 |
| DR03CA-122 | 12.2 | 16,830 | 60 | 62 | 110 | 13 |
| DR03CA-123 | 12.3 | 16,830 | 60 | 62 | 110 | 13 |
| DR03CA-124 | 12.4 | 16,830 | 60 | 62 | 110 | 13 |
| DR03CA-125 | 12.5 | 16,830 | 60 | 62 | 110 | 13 |
| DR03CA-126 | 12.6 | 16,830 | 60 | 62 | 110 | 13 |
| DR03CA-127 | 12.7 | 16,830 | 62 | 63 | 110 | 13 |
| DR03CA-128 | 12.8 | 16,830 | 62 | 63 | 110 | 13 |
| DR03CA-129 | 12.9 | 16,830 | 62 | 63 | 110 | 13 |
| DR03CA-130 | 13.0 | 16,830 | 62 | 63 | 110 | 13 |

- ・上記以外のサイズについてはお問い合わせください。
- ・この商品のコートはTiALNコートのみとなります

Tolerance (公差)

| D | d | L |
|----|----|----|
| h7 | h6 | ±1 |

NEW 超硬S-Pointセンタードリル
(両刃、60°)



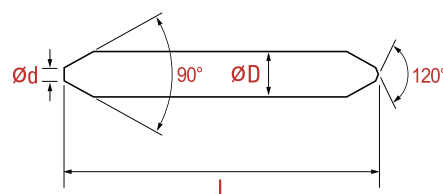
| Item no. 型番 | ϕd 最小 面取り径 | Price価格(円) | | 先端 角度 | ϕD シャンク径 | L 全長 |
|----------------|------------------------|------------|--------|------------------|-------------------|---------|
| | | Non | TiALN | | | |
| SP01CA-01003 | 1.0 | 2,220 | 3,060 | 120° + 60° | 3 | 40 |
| SP01CA-01504 | 1.5 | 3,120 | 3,960 | | 4 | 40 |
| SP01CA-02006 | 2.0 | 4,620 | 5,460 | | 6 | 50 |
| SP01CA-02508 | 2.5 | 6,660 | 7,510 | | 8 | 60 |
| SP01CA-03010 | 3.0 | 8,260 | 9,230 | | 10 | 70 |
| SP01CA-04012 | 4.0 | 11,450 | 13,050 | | 12 | 80 |
| SP01CA-05016 | 5.0 | 17,350 | 19,450 | | 16 | 100 |
| SP01CA-06020 | 6.0 | 27,980 | 31,080 | | 20 | 120 |

| Tolerance (公差) | |
|----------------|----|
| D | L |
| h7 | ±1 |

- 上記以外のサイズについてはお問い合わせください。
- コート商品は型番の後にTiALNが付きます ex) 型番-TiALN

NEW

超硬S-Pointセンタードリル (両刃、90°)

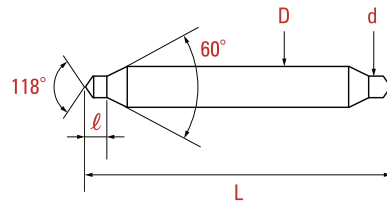


| Item no. 型番 | φd 最小 面取り径 | Price価格(円) | | 先端 角度 | φD シャンク径 | L 全長 |
|----------------|------------------|------------|--------|------------------|-------------|---------|
| | | Non | TiALN | | | |
| SP02CA-01003 | 1.0 | 2,220 | 3,060 | 120° + 90° | 3 | 40 |
| SP02CA-01504 | 1.5 | 3,120 | 3,960 | | 4 | 40 |
| SP02CA-02006 | 2.0 | 4,620 | 5,460 | | 6 | 50 |
| SP02CA-02508 | 2.5 | 6,660 | 7,510 | | 8 | 60 |
| SP02CA-03010 | 3.0 | 8,260 | 9,230 | | 10 | 70 |
| SP02CA-04012 | 4.0 | 11,450 | 13,050 | | 12 | 80 |
| SP02CA-05016 | 5.0 | 17,350 | 19,450 | | 16 | 100 |
| SP02CA-06020 | 6.0 | 27,980 | 31,080 | | 20 | 120 |

| Tolerance (公差) | |
|----------------|----|
| D | L |
| h7 | ±1 |

- ・上記以外のサイズについてはお問い合わせください。
- ・コート商品は型番の後にTiALNが付きます ex) 型番-TiALN

超硬センタードリル A型 60°

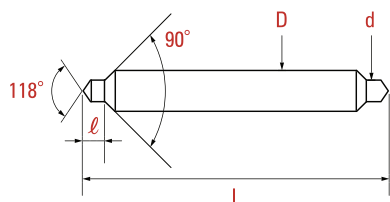


| Item no. 型番 | DXR 規格 | Price (価格(円)) | | L 全長 | ℓ 刃長 |
|----------------|-----------|---------------|--------|---------|---------|
| | | Non | TiAlN | | |
| CD01CA-0104 | 1.0X4.0 | 2,010 | 2,850 | 35 | 1.0-1.5 |
| CD01CA-0155 | 1.5X5.0 | 2,780 | 3,420 | 40 | 1.5-2.5 |
| CD01CA-0206 | 2.0X6.0 | 3,920 | 4,760 | 45 | 2.0-3.0 |
| CD01CA-0256 | 2.5X6.0 | 4,240 | 5,090 | 50 | 2.5-3.6 |
| CD01CA-0306 | 3.0X6.0 | 4,240 | 5,090 | 50 | 3.0-4.0 |
| CD01CA-0408 | 4.0X8.0 | 6,280 | 7,130 | 58 | 4.5-5.5 |
| CD01CA-0410 | 4.0X10.0 | 7,910 | 8,880 | 65 | 4.5-5.5 |
| CD01CA-0510 | 5.0X10.0 | 7,910 | 8,880 | 65 | 5.5-6.5 |
| CD01CA-0612 | 6.0X12.0 | 11,140 | 12,740 | 79 | 6.5-7.5 |

| Tolerance (公差) | | |
|----------------|-----|----|
| D | d | L |
| h7 | k12 | ±2 |

- ・上記以外のサイズについてはお問い合わせください。
- ・コート商品は型番の後にTiAlNが付きます ex) 型番-TiAlN

超硬センタードリル A型 90°

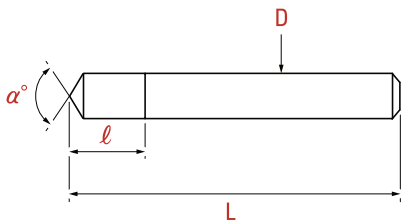


| Item no. 型番 | DXR 規格 | Price (価格(円)) | | L 全長 | l 刃長 |
|----------------|-----------|---------------|--------|---------|---------|
| | | Non | TiALN | | |
| CD02CA-0104 | 1.0X4.0 | 2,680 | 3,530 | 35 | 1.0-1.5 |
| CD02CA-0155 | 1.5X5.0 | 3,730 | 4,370 | 40 | 1.5-2.5 |
| CD02CA-0206 | 2.0X6.0 | 5,230 | 6,070 | 45 | 2.0-3.0 |
| CD02CA-0256 | 2.5X6.0 | 5,650 | 6,490 | 50 | 2.5-3.6 |
| CD02CA-0306 | 3.0X6.0 | 5,650 | 6,490 | 50 | 3.0-4.0 |
| CD02CA-0408 | 4.0X8.0 | 8,020 | 8,870 | 58 | 4.5-5.5 |
| CD02CA-0410 | 4.0X10.0 | 10,060 | 11,030 | 65 | 4.5-5.5 |
| CD02CA-0510 | 5.0X10.0 | 10,060 | 11,030 | 65 | 5.5-6.5 |
| CD02CA-0612 | 6.0X12.0 | 13,630 | 15,230 | 79 | 6.5-7.5 |

| Tolerance (公差) | | |
|----------------|-----|----|
| D | d | L |
| h7 | k12 | ±2 |

- 上記以外のサイズについてはお問い合わせください。
- コート商品は型番の後にTiALNが付きます ex) 型番-TiALN

超硬NC用ポイントドリル 90°

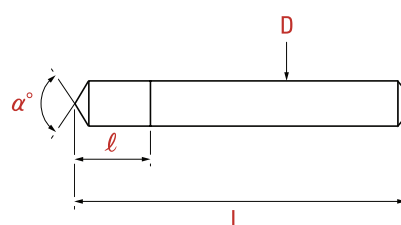


| Item no. 型番 | D 刃径 | Price <価格(円)> | | l 刃長 | L 全長 | d シャンク径 |
|----------------|--------------|---------------|--------|---------|---------|------------|
| | | Non | TiALN | | | |
| NC01CA-020 | 2.0 | 1,780 | 2,340 | 8 | 40 | 2.0 |
| NC01CA-030 | 3.0 | 1,700 | 2,260 | 10 | 45 | 3.0 |
| NC01CA-040 | 4.0 | 1,920 | 2,480 | 12 | 45 | 4.0 |
| NC01CA-050 | 5.0 | 2,780 | 3,340 | 15 | 50 | 5.0 |
| NC01CA-060 | 6.0 | 3,500 | 4,060 | 18 | 50 | 6.0 |
| NC01CA-080 | 8.0 | 5,210 | 5,780 | 23 | 60 | 8.0 |
| NC01CA-100 | 10.0 | 7,790 | 8,430 | 24 | 70 | 10.0 |
| NC01CA-120 | 12.0 | 10,410 | 11,220 | 24 | 70 | 12.0 |
| NC01CA-160 | 16.0(Brazed) | 11,940 | 13,180 | 26 | 80 | 16.0 |
| NC01CA-200 | 20.0(Brazed) | 17,640 | 19,800 | 35 | 100 | 20.0 |
| NC01CA-250 | 25.0(Brazed) | 26,860 | 29,620 | 40 | 120 | 25.0 |

| Tolerance (公差) | | | |
|----------------|-------------------|---------|---------|
| D | Angle(α) | L | l |
| h8 | $\pm 1^\circ$ | ± 1 | ± 1 |

- 上記以外のサイズについてはお問い合わせください。
- コート商品は型番の後にTiALNが付きます ex) 型番-TiALN

超硬NC用ポイントドリル 120°

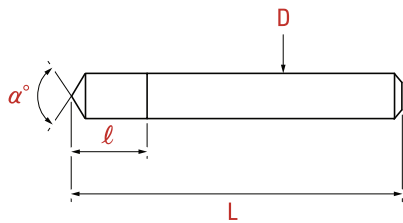


| Item no. 型番 | D 刃径 | Price <価格(円)> | | ℓ 刃長 | L 全長 | d シャンク径 |
|----------------|--------------|---------------|--------|---------|---------|------------|
| | | Non | TiAlN | | | |
| NC02CA-020 | 2.0 | 1,780 | 2,340 | 8 | 40 | 2.0 |
| NC02CA-030 | 3.0 | 1,700 | 2,260 | 10 | 45 | 3.0 |
| NC02CA-040 | 4.0 | 1,920 | 2,480 | 12 | 45 | 4.0 |
| NC02CA-050 | 5.0 | 2,780 | 3,340 | 15 | 50 | 5.0 |
| NC02CA-060 | 6.0 | 3,500 | 4,060 | 18 | 50 | 6.0 |
| NC02CA-080 | 8.0 | 5,210 | 5,780 | 23 | 60 | 8.0 |
| NC02CA-100 | 10.0 | 7,790 | 8,430 | 24 | 70 | 10.0 |
| NC02CA-120 | 12.0 | 10,410 | 11,220 | 24 | 70 | 12.0 |
| NC02CA-160 | 16.0(Brazed) | 11,940 | 13,180 | 26 | 80 | 16.0 |
| NC02CA-200 | 20.0(Brazed) | 17,640 | 19,800 | 35 | 100 | 20.0 |
| NC02CA-250 | 25.0(Brazed) | 26,860 | 29,620 | 40 | 120 | 25.0 |

| Tolerance (公差) | | | |
|----------------|----------|----|----|
| D | Angle(α) | L | ℓ |
| h8 | ±1° | ±1 | ±1 |

- 上記以外のサイズについてはお問い合わせください。
- コート商品は型番の後にTiAlNが付きます ex) 型番-TiAlN

超硬ロングNC用 ポイントドリル 90°

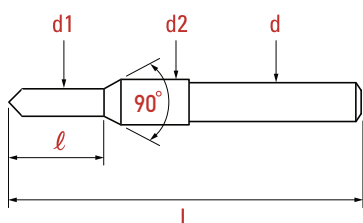


| Item no. 型番 | D 刃径 | Price <価格(円)> | | ℓ 刃長 | L 全長 | d シャンク径 |
|----------------|--------------|---------------|--------|---------|---------|------------|
| | | Non | TiALN | | | |
| NC03CA-030 | 3.0 | 3,300 | 4,180 | 10 | 100 | 3.0 |
| NC03CA-040 | 4.0 | 3,840 | 4,770 | 12 | 100 | 4.0 |
| NC03CA-050 | 5.0 | 6,260 | 7,160 | 15 | 120 | 5.0 |
| NC03CA-060 | 6.0 | 8,270 | 9,730 | 18 | 140 | 6.0 |
| NC03CA-080 | 8.0(Brazed) | 7,930 | 9,460 | 23 | 140 | 8.0 |
| NC03CA-100 | 10.0(Brazed) | 11,740 | 14,260 | 24 | 170 | 10.0 |
| NC03CA-120 | 12.0(Brazed) | 13,140 | 15,940 | 24 | 170 | 12.0 |
| NC03CA-160 | 16.0(Brazed) | 21,630 | 25,890 | 26 | 200 | 16.0 |
| NC03CA-200 | 20.0(Brazed) | 33,650 | 39,190 | 35 | 200 | 20.0 |

| Tolerance (公差) | | | |
|----------------|----------|----|----|
| D | Angle(α) | L | ℓ |
| h8 | ±1° | ±1 | ±1 |

- ・上記以外のサイズについてはお問い合わせください。
- ・コート商品は型番の後にTiALNが付きます ex) 型番-TiALN

超硬段付きドリル 90°

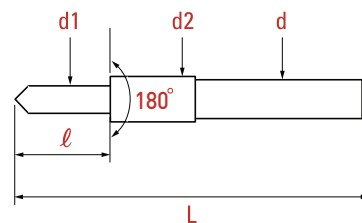


| Item no. 型番 | Designation 呼び | Price 価格(円) | d1 先端径 | d2 大径 | d シャンク径 | ℓ 先端径長 | L 全長 | Remarks 備考 |
|----------------|-------------------|----------------|-----------|----------|------------|-----------|---------|-------------------|
| SD01CA-90030 | M 3 | 3,560 | 3.2 | 6.5 | 6 | 9 | 45 | Solid Carbide |
| SD01CA-90040 | M 4 | 5,550 | 4.3 | 8.6 | 8 | 11 | 50 | |
| SD01CA-90050 | M 5 | 7,360 | 5.3 | 10.4 | 10 | 13 | 55 | |
| SD01CA-90060 | M 6 | 9,890 | 6.4 | 12.4 | 12 | 15 | 63 | |
| SD01CA-90080 | M 8 | 11,910 | 8.4 | 16.4 | 12 | 19 | 100 | Top Solid Carbide |
| SD01CA-90100 | M 10 | 18,800 | 10.5 | 20.4 | 12 | 23 | 110 | |

・上記以外のサイズについてはお問い合わせください。

| Tolerance (公差) | | | |
|----------------|----|----|----------|
| d1 | d2 | d | Angle(α) |
| h8 | h9 | h8 | ±1° |

超硬段付きドリル 180°



| Item no. 型番 | Designation 呼び | Price 価格(円) | d1 先端径 | d2 大径 | d シャンク径 | l 先端径長 | L 全長 | Remarks 備考 |
|----------------|-------------------|----------------|-----------|----------|------------|-----------|---------|-------------------|
| SD02CA-18030 | M 3 | 3,450 | 3.4 | 6 | 6 | 9 | 45 | Solid Carbide |
| SD02CA-18040 | M 4 | 4,950 | 4.5 | 8 | 8 | 11 | 50 | |
| SD02CA-18050 | M 5 | 7,160 | 5.5 | 10 | 10 | 13 | 55 | |
| SD02CA-18060 | M 6 | 8,220 | 6.6 | 11 | 11 | 15 | 63 | |
| SD02CA-18080 | M 8 | 11,330 | 9 | 15 | 12 | 19 | 100 | Top Solid Carbide |
| SD02CA-18100 | M 10 | 15,160 | 11 | 18 | 12 | 23 | 110 | |
| SD02CA-18120 | M 12 | 19,920 | 14 | 20 | 12 | 28 | 110 | |

- 上記以外のサイズについてはお問い合わせください。
- コート商品は型番の後にTiALNが付きます ex) 型番-TiALN

| Tolerance (公差) | | | |
|----------------|----|----|-------------------|
| d1 | d2 | d | Angle(α) |
| h8 | h9 | h8 | $\pm 1^\circ$ |

DR01CA - Solid Carbide 2F Drills

| Work materials | Soft Cast Iron | | Hard Cast Iron | | Non-Alloy Steels | | Alloy Steels | | Stainless Steels | |
|----------------|----------------|------|----------------|------|------------------------|------|-------------------------|------|------------------|------|
| Strength | <HB240, GG25 | | <HB300, GG40 | | <700 N/mm ² | | <1000 N/mm ² | | HRC45 ~ HRC55 | |
| Diameter | RPM | Feed | RPM | Feed | RPM | Feed | RPM | Feed | RPM | Feed |
| 3.0 | 10,500 | 0.06 | 7,600 | 0.06 | 7,800 | 0.05 | 5,700 | 0.05 | 4,000 | 0.04 |
| 4.0 | 7,800 | 0.07 | 5,700 | 0.07 | 5,800 | 0.06 | 4,300 | 0.06 | 3,000 | 0.05 |
| 5.0 | 6,200 | 0.08 | 4,500 | 0.08 | 4,700 | 0.07 | 3,500 | 0.07 | 2,400 | 0.06 |
| 6.0 | 5,200 | 0.09 | 3,800 | 0.09 | 3,900 | 0.08 | 2,800 | 0.08 | 2,000 | 0.07 |
| 7.0 | 4,500 | 0.10 | 3,300 | 0.10 | 3,300 | 0.09 | 2,500 | 0.09 | 1,700 | 0.08 |
| 8.0 | 3,900 | 0.12 | 2,800 | 0.12 | 2,900 | 0.10 | 2,100 | 0.10 | 1,500 | 0.09 |
| 9.0 | 3,500 | 0.14 | 2,500 | 0.14 | 2,600 | 0.11 | 1,900 | 0.11 | 1,300 | 0.10 |
| 10.0 | 3,100 | 0.16 | 2,300 | 0.16 | 2,300 | 0.12 | 1,700 | 0.12 | 1,200 | 0.11 |
| 11.0 | 2,800 | 0.18 | 2,100 | 0.18 | 2,100 | 0.13 | 1,600 | 0.13 | 1,100 | 0.12 |
| 12.0 | 2,600 | 0.20 | 1,900 | 0.20 | 1,900 | 0.14 | 1,400 | 0.14 | 1,000 | 0.13 |
| 13.0 | 2,400 | 0.20 | 1,700 | 0.20 | 1,800 | 0.16 | 1,300 | 0.16 | 950 | 0.13 |

RPM = rev./min. Feed = min/rev.

DR02CA - Solid Carbide 2F Regular Drills

| Work materials | Aluminum | | Cast Iron | | Prehardened Steels | |
|----------------|--------------|--------|--------------|--------|------------------------|-------|
| Hardness | <HB240, GG25 | | <HB300, GG40 | | <700 N/mm ² | |
| Diameter | RPM | Feed | RPM | Feed | RPM | Feed |
| 3.0 | 11,000 | 330.00 | 5,500 | 110.00 | 4,500 | 45.00 |
| 4.0 | 9,000 | 360.00 | 4,400 | 110.00 | 3,600 | 50.00 |
| 6.0 | 6,670 | 400.00 | 3,220 | 110.00 | 2,630 | 65.00 |
| 8.0 | 4,350 | 348.00 | 2,050 | 102.00 | 1,650 | 66.00 |
| 10.0 | 3,600 | 360.00 | 1,700 | 94.00 | 1,380 | 69.00 |
| 12.0 | 2,850 | 340.00 | 1,350 | 81.00 | 1,125 | 67.00 |

RPM = rev./min. Feed = min/rev.

DR03CA - Solid Carbide 2F Flat Drills

| Work materials | Carbon steel | | Alloy Steel | | Hardened Steels | | Aluminum Alloy | |
|----------------|--------------|------|-------------|------|-----------------|------|----------------|-------|
| Strength | <200HB | | ~ HRC30 | | ~ HRC40 | | | |
| Diameter | RPM | Feed | RPM | Feed | RPM | Feed | RPM | Feed |
| 3.0 | 7,950 | 420 | 6,900 | 360 | 3,700 | 170 | 17,000 | 1,020 |
| 4.0 | 5,950 | 420 | 5,150 | 360 | 2,800 | 170 | 12,500 | 1,020 |
| 6.0 | 4,000 | 420 | 3,450 | 360 | 1,800 | 170 | 8,500 | 1,020 |
| 8.0 | 3,000 | 420 | 2,600 | 360 | 1,400 | 170 | 6,350 | 1,020 |
| 10.0 | 2,400 | 420 | 2,050 | 360 | 1,100 | 170 | 5,100 | 1,020 |
| 12.0 | 2,000 | 420 | 1,700 | 360 | 950 | 170 | 4,250 | 1,020 |

RPM = rev./min. Feed = min/rev.

CD01CA - Solid Carbide CenterDrills

| Work materials | Aluminum | | | Carbon Steel | | | Alloy Steels | | | Hardened Steels | | | Stainless Steels | | |
|----------------|---------------|--------|------|---------------|-------|------|---------------|-------|------|-----------------|-------|------|------------------|-------|------|
| Diameter | Cutting speed | RPM | Feed | Cutting speed | RPM | Feed | Cutting speed | RPM | Feed | Cutting speed | RPM | Feed | Cutting speed | RPM | Feed |
| 1.0×4.0 | 150 | 12,000 | 0.07 | 50 | 4,000 | 0.05 | 40 | 3,200 | 0.04 | 25 | 2,000 | 0.04 | 30 | 2,400 | 0.05 |
| 1.5×5.0 | 150 | 9,500 | 0.08 | 50 | 3,200 | 0.07 | 40 | 2,500 | 0.05 | 25 | 1,600 | 0.05 | 30 | 1,900 | 0.07 |
| 2.0×6.0 | 150 | 8,000 | 0.10 | 50 | 2,700 | 0.08 | 40 | 2,100 | 0.07 | 25 | 1,300 | 0.07 | 30 | 1,600 | 0.08 |
| 3.0×8.0 | 150 | 6,000 | 0.13 | 50 | 2,000 | 0.11 | 40 | 1,600 | 0.10 | 25 | 990 | 0.10 | 30 | 1,200 | 0.11 |
| 5.0×10.0 | 150 | 4,800 | 0.19 | 50 | 1,600 | 0.14 | 40 | 1,300 | 0.13 | 25 | 800 | 0.13 | 30 | 950 | 0.14 |
| 6.0×12.0 | 150 | 4,000 | 0.20 | 50 | 1,300 | 0.19 | 40 | 1,100 | 0.14 | 25 | 660 | 0.14 | 30 | 800 | 0.16 |

RPM = rev./min. Feed = min/rev.

NC01CA - Solid Carbide NC Spotting Drills

| Work materials | Aluminum | | Carbon Steel | | Alloy Steels | | Hardened Steels | | Stainless Steels | |
|----------------|----------|------|--------------|------|--------------|------|-----------------|------|------------------|------|
| Cutting speed | 155m/min | | 70m/min | | 50m/min | | 37m/min | | 38m/min | |
| Diameter | RPM | Feed | RPM | Feed | RPM | Feed | RPM | Feed | RPM | Feed |
| 6.0 | 8,800 | 0.11 | 3,800 | 0.09 | 2,850 | 0.08 | 1,950 | 0.07 | 2,000 | 0.07 |
| 8.0 | 6,600 | 0.15 | 2,850 | 0.12 | 2,150 | 0.10 | 1,450 | 0.09 | 1,500 | 0.09 |
| 10.0 | 5,300 | 0.19 | 2,300 | 0.16 | 1,700 | 0.12 | 1,200 | 0.11 | 1,200 | 0.11 |
| 12.0 | 4,450 | 0.23 | 1,900 | 0.20 | 1,450 | 0.14 | 980 | 0.13 | 1,000 | 0.13 |
| 16.0 | 3,300 | 0.27 | 1,450 | 0.24 | 1,100 | 0.17 | 735 | 0.17 | 755 | 0.17 |
| 20.0 | 2,650 | 0.31 | 1,150 | 0.28 | 850 | 0.19 | 590 | 0.20 | 590 | 0.20 |

RPM = rev./min. Feed = min/rev.

SP01CA/SP02CA - Solid Carbide 2F SP Centerdrills (60° & 90°)

| Work materials | Carbon Steels | | Prehardened Steels | | Stainless Steels | | Hardened Steels | | Aluminum alloy | |
|----------------|---------------|------|--------------------|------|------------------|------|-----------------|------|----------------|-------|
| Hardness | ~ HRc30 | | HRc30 ~ HRc45 | | | | HRc45 ~ HRc55 | | | |
| Shank Diameter | 55 | | 50 | | 30 | | 25 | | 150 | |
| Shank Diameter | RPM | Feed | RPM | Feed | RPM | Feed | RPM | Feed | RPM | Feed |
| 6 | 2,900 | 260 | 2,700 | 240 | 1,600 | 145 | 1,300 | 970 | 8,000 | 1,800 |
| 8 | 2,200 | 250 | 2,000 | 230 | 1,200 | 135 | 990 | 90 | 6,000 | 1,550 |
| 10 | 1,800 | 250 | 1,600 | 225 | 950 | 135 | 800 | 92 | 4,800 | 1,450 |
| 12 | 1,500 | 240 | 1,300 | 210 | 800 | 125 | 660 | 92 | 4,000 | 1,400 |

RPM = rev./min. Feed = min/rev.